

A teal-tinted photograph of a person riding a horse. The rider is wearing a dark jacket and pants, and the horse is wearing a bridle and saddle. The background features a pattern of white dots on a dark background. The text "AUGUST 7-10, 2024" is overlaid at the bottom in a bold, white, sans-serif font.

AUGUST 7-10, 2024

[Click here for Table of Contents](#)



WEBERCOUNTYFAIR.ORG

TABLE OF CONTENTS

Click any page or heading below to go directly to that page

Table of Contents	III
Important Entry Information	1
Daily Promotions	2
Fair Dates, Hours, and Prices	3
Major Entertainment	4
Weber County Commissioners	6
Weber County Fairgrounds Advisory Board	6
Grand Champion Sponsors	7
General Rules & Guidelines	8
Community Booths	9
Special Contest	10
Table Settings	10
Fabric Arts	10
Food Arts	11
Needle Arts	14
Quilted Arts	15
Photography	16
Fine Arts	17
Craft Arts	17
Flowers and Plants	18
Crops	19
Weber County 4-H	22
Junior Livestock	28
Breeding Heifer Show	28
Bucket calf	28
Fiesta Fun 4-H	29
Horse Show	29
Jr. Posse	29
Horse Show	29
Open All-Breed Horse Show	30
Horse Pulls	31
Poultry	32
Rabbits	32
Open & Jr. Dairy	34
Peewee Goat Show	35
4H Indoor Exhibit Entry Form	36
Dairy Entry Form	37
Peewee Goat Entry Form	38
Fiesta 4-H Horse Show Entry Form	39
Jr. Posse Entry Form	40
Open All Breed Horse Show Entry Form	41
Poultry Entry Form	42
Rabbit Entry Form	43

Click on the footer or page number of any page to return to the Table of Contents





IMPORTANT ENTRY INFORMATION

NEW THIS YEAR!
Competitive Exhibits will NOT have a cost for entering.

Weber County Fair | August 7 - 10, 2024

Department	Page	Entry Fee	Entry Day or Deadline	Show Date(s)	Release Date
4-H Indoor Exhibits	24	No entry fee	July 26	August 7 - 10	August 12
Bucket Calf	30	See: weberjrlivestock.org	weberjrlivestock.org	August 7	August 10
Craft Arts	19	No entry fee	August 5	August 7 - 10	August 12
Community Booths	11	Paid \$75 Stipend to Participate	August 2	August 7 - 10	August 12
Crops	21	No entry fee	August 6	August 7 - 10	August 12
Dairy	36	\$10	August 3	August 9	August 10
Fine Arts	19	No entry fee	August 5	August 7 - 10	August 12
Flowers and Plants	20	No entry fee	August 6	August 7 - 10	August 12
Heifer	30	See: weberjrlivestock.org	weberjrlivestock.org	August 8	August 10
Home Arts Fabric, Food, Needle, Quilts	12	No entry fee	August 5 August 6 Food	August 7 - 10	August 12
Horse Shows • All Breed • Fiesta 4-H • Jr. Posse	32 31 31	\$12/Class, \$10/Youth Class \$20 \$20	August 2 August 2 August 2	August 10 August 7 August 8	No overnight stays
Peewee Goat	37	\$5	July 31	August 7	No overnight stays
Photography	18	No entry fee	August 5	August 7 - 10	August 12
Poultry	34	\$5	July 31	August 7 - 10	August 10
Rabbits	34	\$5	August 2	August 7 - 10	August 10
Rodeo	6	To enter, call Ben German @ (801) 540-6233	July 30 after 6 p.m.	August 7	NA
Table Settings	12	No entry fee	August 6	August 7 - 10	August 12

DAILY PROMOTIONS

AUGUST 7

WEDNESDAY

\$2 admission with a nonperishable food donation

AUGUST 8

THURSDAY

Free admission with coloring contest (12 & under)

\$2 admission with a school supply donation

FREE ADMISSION

MILITARY & FIRST RESPONDERS

All military personnel and first responders (police, firefighters, EMS) will receive free fair admission for self and one other guest by showing appropriate identification.

DAILY FAIR HOURS

WEDNESDAY – SATURDAY: 11 AM – 11 PM



FAIR DATES, HOURS, AND PRICES

DAY PASSES

Family Pass.....	\$30
(2 adults & 4 students or children OR 4 adults)	
Adult (18-61).....	\$10
Student (13-17) / Senior Citizen (62+).....	\$8
Children (6-12).....	\$6
Children 5 & under.....	FREE

SEASON PASSES

Adult (18-61).....	\$30
Student (13-17) / Senior Citizen (62+).....	\$24
Children (6-12).....	\$18
Children 5 & under.....	FREE

BULL FIGHTS

(bullfight ticket includes fair admission)

General Admission (13+).....	\$20
Children (6-12).....	\$15
Children 5 & under.....	FREE

DEMOLITION DERBY

(derby ticket includes fair admission)

Advanced tickets

(purchased by 5 p.m. on July 31)

Premium Reserved - west side.....	\$33
Reserved - east side.....	\$28

Tickets

(purchased after 5 p.m. on July 31)

Premium Reserved - west side.....	\$38
Reserved - east side.....	\$33

The Weber County Fair will run August 7 - 10.

The Fair will open each day at 11 a.m. and close each night at 10 p.m. The barn gate will open each morning at 6 a.m. A barn pass will be required to park and use the barn gate.



Tax & Fees Included
For ticketing information,
please call (801) 399-8267.

MAJOR ENTERTAINMENT

WEDNESDAY, AUGUST 7

\$2 admission with a nonperishable food donation to Catholic Community Services



RODEO

7 p.m. | Outdoor Stadium

THURSDAY, AUGUST 8

\$2 admission with a school supply donation

Free admission with coloring contest (12 & under)



COMEDY SHOW: Seth Tippetts opening for headliner Jon Reep

7 p.m. | Grandstand

FRIDAY, AUGUST 9



HORSE PULLS
6 p.m. | Riding Arena



BULLFIGHTS
7 p.m. | Outdoor Stadium

SATURDAY, AUGUST 10



JR. LIVESTOCK AUCTION
9 a.m. | Golden Spike Arena



DEMOLITION DERBY
7 p.m. | Outdoor Stadium

ATTRACTIONS & GROUNDS ENTERTAINMENT

Hypnotist Shows

Inflatables

Petting Farm

Wood Carver

Mechanical Bull

Hamster Balls on Water

Cowtown USA

Antique Tractor

Robot Rangers

Thrill Extravaganza

Stunt Dog Show

Ventriloquist

TNT Basketball Squad

World's Funniest Photo Booth

Local Entertainment

Bungee Trampoline

Magician Shows

Rock Wall

Strolling Princesses & Superheroes

Marcus, the Funny Man

Who Does Tricks

WEBER COUNTY COMMISSIONERS



James H. "Jim" Harvey
COMMISSIONER



Sharon Bolos
COMMISSIONER



Gage Froerer
COMMISSIONER

WEBER COUNTY FAIRGROUNDS ADVISORY BOARD



Teddy Anderson



Sheriff
Ryan Arbon



Jon Beesley



Naomi Brower



Tiffany
Christiansen



Susan Clontz



Tom Close



Jeremy Dearden



Lee Dickemore



Korry Green
Chair



Shae Hill



Sharlan Holmes



Sgt. Brandon
Miles



Mike Mathieu



Lora Parker



Connie Robinson
Chair



Mille Stewart



Monte Stewart



David Widdison



GRAND CHAMPION SPONSORS



YOUR LOCAL FORD STORES
buyfordnow.com | @WasatchFrontFord



Great Resort
Vacations



GENERAL RULES & GUIDELINES

ENTRIES

Competition is open to Weber County residents only, unless otherwise stipulated in department rules.

1. Competition at the Weber County Fair is governed by these general rules and by each department rules.
2. There must be three entries in a class to pay premiums. If there are not three entries in a class, classes can be paid in combined classes, or not at all.
3. Entry forms, complete and properly filled out, must be submitted for all departments on or before the deadline specified. Mail to Weber County Fair, 1000 North 1200 West, Ogden, Utah 84404. Exhibits will not be accepted if entry forms have not been postmarked by deadline. A returned check will incur a returned check fee.
4. All entries must be submitted on entry forms furnished by the Weber County Fair and by the rules listed in each department. No refunds will be given on entry fees.
5. Unless otherwise provided, animals or articles can be entered only by their owner or producer. Any attempt to perpetrate fraud by misrepresentation will bar the specimen from competing for any premium. Department superintendents may remove from the grounds any exhibit that is falsely entered or which may be deemed unsuitable or objectionable.
6. Any article eligible to enter, not enumerated in the premium list, will be entered in its appropriate class, but no premium shall be awarded unless by special action of the board.
7. If it is necessary for an exhibitor to send an exhibit by freight or express, it must be sent prepaid, and no signature required, to the Weber County Fair, 1000 North 1200 West, Ogden, Utah 84404.



PREMIUMS

All prizes will be awarded at the earliest possible time after judging. Premiums will be distributed during the fair, Wednesday through Thursday from 2 p.m. - 10 p.m., Friday from 2 p.m. - 11 p.m., and Saturday from 11 a.m. - 11 p.m. at the premium bank located in the Northwest corner of the Golden Spike Arena. Premium money may be collected from 10 a.m. - 5 p.m., Monday - Friday after the Fair until August 31. Money not collected by August 31 will be forfeited. NO EXCEPTIONS! Picture ID of exhibitor is required. If picture ID is not available, the exhibitor's guardian will be required to collect premium money.

JUDGING

1. No judge will be allowed to exhibit in the department in which he/she is acting as a judge.
2. A judge should not be allowed to judge exhibits entered by a member of his or her immediate family. The judge should notify the department superintendent prior to judging if this situation occurs.
3. Judges must avoid contact with the exhibitors and will refuse to hear the merits or demerits of exhibits by anyone. They must, if an attempt be made by an exhibitor to interfere or influence their decision, report the fact at once to the department superintendent.
4. Premiums offered by the fair cannot be changed by any judge or superintendent, and no extra premiums can be awarded.
5. Judges must not award prizes to an unworthy exhibit. It is the intention of the management that no premium or distinction of any kind shall be given to any animal or article that is not deserving. This rule must be strictly adhered to whether or not there is competition.
6. The judges and persons acting as clerks to the judge must use special care after the award has been made, to see that the name is properly entered in the record book and on the premium voucher, for it is upon this entry that the payment of premium is made.
7. The judge, superintendent, or clerk, recording the awards of the department, must sign the record book and premium voucher at the close of each class immediately after all awards in said class have been made.
8. The entry clerks shall under no circumstances allow the award records to go from their possession, or to be inspected by anyone, except authorized officers until entries of judges' decisions

have been made, the records audited and closed.

9. The judge should read the general rules and all special rules under the heading of the department or class in which they are to serve, and especially note and mark those rules bearing on the classes to adjudicate by them. Ignorance of rules is inexcusable with a judge
10. Objection to any person serving as judge must be made to the Fair Director in writing prior to any award made, giving good and sufficient reason thereof.
11. If a protest or grievance is made, it should be made in writing to the Fair Director, along with a \$50 cash deposit. It will then be taken to the board for a ruling. If the protest or grievance is not sustained, the deposit will be forfeited.
12. If it be ascertained that any exhibitor has, in an ungentle-manly manner, taken exception to the judgment or ruling of a judge, employee, or any official of the Weber County Fair, or the board, can bar the said person from competing for a premium or exhibiting on the grounds until he has made proper apology and is reinstated by the board.

PARTICIPANT TICKETS

Fair participants are eligible to purchase passes at a discount. Please refer to department and division rules for information. To purchase participant passes, ID and entry form receipts are needed. Participant tickets will be available at the Golden Spike Arena Box Office at the time of entry. Participant tickets MUST be purchased on or before August 6 by 5 p.m.

CONCESSIONS & COMMERCIAL EXHIBITORS

1. Items that aren't allowed to be sold at the Weber County Fair are: play or candy cigarettes, silly string (or spray), stink bombs, bumper stickers, cigarette lighters, tobacco or tobacco related products, e-cigarettes, vaping products, CBD products, and any non-FDA approved nicotine product.
2. The board reserves the right to remove from the grounds any sign, banner, or advertising matter of any kind which may be unsuitable or objectionable without assigning reasons thereof.
3. Concessionaires must comply with state, county, and city food and health requirements. All deliveries of supplies must be made one hour before fair opens.

4. The booth, stand, or tent, erected by the concessionaire, must be such a nature as to meet the approval of the board and the Food and Beverage Manager.
5. Any special electrical wiring or connections to utilities will need prior approval of the fair maintenance.
6. Any approved changes will be done by the exhibitor or concessionaire at no cost to the fair. The exhibitor or concessionaire must restore the building to original form before vacating.

GENERAL PUBLIC

1. Management reserves the right to remove from the grounds any persons distributing advertising material, political flyers, or conducting private business that does not have an authorized lease agreement.
2. Any member of the visiting public who feels they have been mistreated by fair personnel, exhibitors, food concession personnel, or other, shall submit, in writing, a detailed summary of their complaint for action by fair management and the board.
3. Any member of the visiting public involved in any type of accident while on the fairgrounds shall contact the Golden Spike Events Center and request that an official accident report be filled out by a staff member.
4. No dogs, bicycles, scooters, roller blades, motorcycles, or non-approved golf cars will be allowed on the fairgrounds without written approval from fair management.
5. Any member of the visiting public purchasing merchandise or entering into contracts with commercial, education, or non-profit exhibitors is responsible for his/her own transactions. The Weber County Fair and its board will not assume responsibility for faulty merchandise or for agreements entered into by a patron.
6. If fairgoers return items purchased by vendors, they are expected to have an entrance ticket to enter. Entrance will not be permitted otherwise.
7. Patrons should not deface the grounds, buildings, tents, or exhibitors booths.
8. No fires or flammable materials are allowed on the fairgrounds without approval from the Fire Marshall.
9. Patrons shall not remove Weber County property from the buildings and grounds.

10. No carry-in coolers or outside food and beverage of any kind will be allowed.
11. The Weber County Fairgrounds are a smoke-free facility. Cigarettes and e-cigarettes are NOT permitted.

LIABILITY OF EXHIBITORS/ GENERAL PUBLIC

In no case shall the Weber County Fair, or any of its officers, be held responsible for damages in any loss, damage, injury, death, disability by disease, from theft, from any other cause to any such property, or to any person at the Weber County Fairgrounds. The Weber County Fair hereby does not assume any responsibility for the safety of any property brought upon the Weber County Fairgrounds. While the fair personnel will exercise all reasonable precautions, any property displayed is done at the owner's risk. Fair management reserves the right to expel from the grounds any person(s) who violate any of the general or special department rules.

Those associated with an exhibit are not allowed to have alcohol beverages in their exhibit area.

COMMUNITY BOOTHS

Superintendent: Susan Clontz
(801) 710-0257

Community booths are a great way to share your city or community with everyone and show them what you're all about.

GENERAL RULES

1. Only one booth per city/community.
2. Submit names of those doing booths to Susan. Names are needed as soon as possible to plan booth space. Absolute deadline is August 2 by 5 p.m.
3. Decorations in booth should be of fire-resistant or non-flammable materials (call local fire department on how to make items fire resistant or non-flammable).
4. A tarp or covering that will protect against discoloration, should be used if using material on the floor.
5. Each booth space will be 8' across the front, 8' deep; and 8' tall. It is a pipe and drape frame. No other booth supplies will be provided. Do not plan to use drape for hanging things.
6. Signs will be provided for each

participating community booth. If you want to use your own sign, please indicate that at time of signing up.

7. Booth set up; Tuesday, August 6 between 7 p.m. and 8 p.m. **NO EXCEPTIONS!** Booth space will be given out on a first come basis.
8. Booth take down: Monday, August 12 between 7 p.m. – 9 p.m. **NO EXCEPTIONS!** If you are unable to pick up your display, please arrange to have someone do it for you!
9. The fair is not responsible for articles left or lost.
10. Power will be available, however, you must provide your own extension cords.
11. Only minimum security is provided, so exhibitors are urged to use discretion regarding valuable items in the booth.
12. All rules must be adhered to (including booth size). Failure to do so will disqualify a booth from being judged.
13. Booths should depict your community.

JUDGING

Judging will take place prior to the opening of the fair. Judging is closed to the public.

AWARDS

- **First Place: Blue Rosette**
- **Second Place: Red Rosette**
- **Third Place: White Rosette**

Each community that participates will receive a stipend of \$75 to help defray costs. Ribbons will be posted on booths prior to fair opening. All stipend money will be signed for at booth set up. The fair will be offering the "People's Choice Community Booth" award. Come cast your vote for your favorite Community Booth. The award will be given Saturday, August 10, at 4 p.m.



SPECIAL CONTEST

Superintendent: Robyn Bitton
(801) 668-0991
robynbarton@hotmail.com

ENTRY INFORMATION

1. No charge for contests.
2. Registration will be one half hour before contest.
3. No contestant can compete against himself/herself – only one entry per person.
4. Contestants must be in the contest canopy at time of contest.
5. Superintendent reserves the right to refuse entries that do not meet established entry criteria.
6. Special Contests are subject to change at the discretion of the superintendent.

DATES AND TIMES

Wednesday, August 7:

- 2 pm – Hula Hoop & Jump Ropes
- 3 pm – Bows and Arrows
- 4 pm – Jello Slurp
- 5 pm – Corn Husking Contest
- 6 pm – Name the Animal & Sawdust Scramble

Thursday August 8:

- 2 pm – Frisbee Toss & Ring Toss
- 3 pm – Relay Races & Water Balloon Toss
- 4 pm – Cornhole, Make & Take Craft, Licorice Snarf
- 5 pm – Corn on the Cob Eating Contest
- 6 pm – Pickle Eating Contest

Friday August 9:

- 12 pm – Chalk Art
- 1 pm – Water Balloon Toss
- 2 pm – Make and Take Craft
- 3 pm – Facts of Weber County
- 4 pm – Roping the Dummy
- 5 pm – Hit the Spot
- 6 pm – Donut Eating Contest
- 7 pm – Watermelon Eating Contest

Saturday August 10:

- 12 pm – Facts of Weber County
- 1 pm – Bubble Gum Blowing & Chalk Art
- 2 pm – Bean Bag Toss, 3 Legged Race, and Skip 'em
- 3 pm – Make and Take Craft
- 4 pm – Stick Horse Races & Egg Toss Bullseye
- 5 pm – Pie Eating Contest (Kids)

- 6 pm – Pie Eating Contest (Adults)
- 7 pm – Water Balloon Toss

TABLE SETTINGS

Superintendent: Cari Southwick
(801) 791-5425
cari.montgomery@ymail.com

GENERAL ENTRY & JUDGING CRITERIA

1. Entries are limited to current residents of Weber County (including all of Hooper and South Weber).
2. No exhibitor can compete against himself/herself.
3. The Weber County Fair does not carry insurance for loss, theft, or damage to personal property while it is on the Fairgrounds and, therefore, does not assume any liability.
4. Judging Criteria: Use of theme; creativity; set correctly; plate, glassware, silverware, napkins, appearance; clean, fits table, pressed etc..
5. Judging is not open to the public
6. No electricity will be available.
7. Limited to two entries per person in each division.
8. If an exhibitor wins Sweepstakes and Best of Show, they will only receive the Sweepstakes premium.

ENTRY FEES

Adults (18+) FREE
Youth (6 -17) FREE

ENTRY & RELEASE DATE

1. Entries will be accepted on Tuesday, August 6 from 6 p.m. – 8 p.m.
2. Release of exhibits and ribbons is Monday, August 12 from 7 p.m.– 9 p.m. Any entry not picked up during that time will become the property of the Weber County Fair. NO EXCEPTIONS!
3. Exhibitors will be eligible to purchase (1) discounted day or week pass. Passes are available the day of entry ONLY. One per exhibitor.
4. Exhibitor must provide own card table, space provided will be approximately 30" x 36" for each table setting.
5. Contestants must furnish all table setting supplies.
6. After judging is completed, the table settings must remain on display for the remainder of the fair.

AWARDS & PREMIUMS

Blue, red, and white ribbons will be awarded according to the Danish System in all divisions.

Premiums awarded for **Youth and Disabled** will be:

- Blue Ribbon \$3
- Red Ribbon \$2
- White Ribbon \$1

Premiums awarded for **Adult Division**:

- **BEST-OF-SHOW:** One \$25 premium will be given in each category, with three or more entries. Any categories with less than three entries will be combined during judging.
- **SWEEPSTAKES:** One \$50 premium will be given in each category.

CATEGORIES

ADULT DIVISION

- Pretty in Pink
- Mother's Day Luncheon
- New Year's Celebration
- God Bless the USA

YOUTH DIVISION

- Picnic in the Park
- Candyland
- Grandma's House
- Taylor Swift: The Eras Party

FABRIC ARTS

Superintendent:
Louie Willoughby & Marcia Bailey
(801) 391-4223, (801) 721-8543
louietoie@aol.com, mjclady@gmail.com

REGULATIONS

1. Soiled items will be disqualified for judging.
2. Entries to be considered for Judge's Choice (original designs) must be identified as such at time of entry. Original designs must include the drawings, pattern envelopes, and/or picture of designing ideas at time of entry.
3. Items with machine embroidery or fancy machine stitching will be judged in their entirety, unless otherwise specified at time of entry.
4. All items must have been completed in the 2023-2024 season.
5. No unfinished work will be accepted for entry.
6. If an exhibitor wins Sweepstakes and Best of Show, they will only receive the Sweepstakes premium.

ENTRY FEES

Adults (18+)	FREE
Youth (6 -17)	FREE

ENTRY & RELEASE DATES

1. Entries will be accepted on Monday, August 5 from 1 p.m. – 8 p.m. in the Exhibit Hall. No late entries will be accepted!
2. Release of exhibits and ribbons will be Monday, August 12 from 4 – 7 p.m. **ABSOLUTELY NO ENTRIES WILL BE RELEASED PRIOR TO THIS TIME.** Any items not claimed by this time will be donated to a local charity.
7. Exhibitors will be eligible to purchase (1) discounted day or week pass. Passes are available the day of entry ONLY. One per exhibitor.

CATEGORIES AND CLASSES

A. INFANT'S APPAREL

(Up to 2 years)

1. Cap or Bonnet
2. Coat
3. Dresses
4. Baptismal or Christening attire
5. Rompers or Suits
6. Sleep wear
7. Play wear
8. Other

B. CHILDREN'S APPAREL

(ages 3 –11 years)

1. Blouses and Shirts
2. Pants
3. Skirts or Jumpers
4. Dresses
5. Coats
6. Sleep wear
7. Other

C. WOMEN'S APPAREL

(ages 12–Adults)

1. Dresses
2. Best dresses
3. Tailored dresses or Suits
4. Blouses or Shirts
5. Skirts or Jumpers
6. Pants or Jeans
7. Casual wear
8. Sleep wear
9. Other

D. FORMAL WEAR

1. Adult wear
2. Children wear
3. Wedding dresses
4. Men's wear

5. Other

E. MEN'S APPAREL

(ages 12 – Adult)

1. Shirts
2. Sleep wear
3. Trousers or Jeans
4. Tailored suits
5. Leisure wear
6. Coats
7. Jackets or Vests
8. Other

F. KNITWEAR

1. T-shirts
2. Pants or Skirts
3. Sweat suits
4. Sleep wear
5. Dresses
6. Lingerie items
7. Swim wear
8. Coordinating outfit (3 to 5 pieces)
9. Other

G. COSTUMES

1. Men's
2. Women's
3. Children's
4. Infant's
5. Other

H. MISCELLANEOUS & UNIQUE ITEMS

1. Machine-made laces/free standing lace
2. Drapery
3. Ornaments
4. Other

I. ORIGINAL DESIGN

J. RAG QUILTS

K. TIED QUILTS

1. Pieced
2. Whole Cloth (one piece)
3. Appliquéd

L. PILLOWS

1. Pieced
2. Appliquéd
3. Machine Embroidered
4. Quilted (whole cloth)
5. Quilted (pieces)
6. English Paper Pieced
7. Pillow cases (set of 2)

M. KIDS ITEMS

1. Stuffed animals
2. Doll clothes

N. TABLE RUNNERS

1. Pieced
2. Embroidery Machine

O. WALL HANGINGS

1. Mini quilt (20"x 20" or smaller)
2. Embroidery Machine Quilts
3. Pieced
4. Appliquéd
5. Whole cloth (one piece)
6. English paper pieced quilts
7. Wool quilt

P. PURSES/BEACH BAGS/TRAVEL BAGS

1. Pieced
2. Appliquéd
3. Machine Embroidered
4. Machine Pieced
5. Quilted
6. English paper pieced

JUDGING

Exhibits will be judged according to the Danish System. Judges will be instructed to award ribbons to all entries. If no competition exists and an article is not worthy of a blue ribbon, judges may award red or white ribbon placing according to their judgment.

AWARDS & PREMIUMS

Blue, red, and white ribbons will be awarded according to the Danish System in all divisions. Premiums awarded for **Youth and Disabled** will be:

- Blue Ribbon \$3
- Red Ribbon \$2
- White Ribbon \$1

Premiums in **Adult Division** will be:

- One **BEST-OF-SHOW** will be given \$25 cash and/or gift certificates in each category.
- One **JUDGES CHOICE** will be given \$50.
- One **SWEEPSTAKES** will be given \$100.

FOOD ARTS

Superintendent:

Jim Perry, (801) 698-9117

jamesperry566@gmail.com

REGULATIONS

1. Only products of home kitchens are eligible for entry.
2. Baked items will only be accepted on a plastic plate, covered with plastic wrap.
3. Entries to be considered for the Judge's Choice Award (original recipes) must be identified as such at entry time.
4. All food entries must be accompanied by a 4" x 6" recipe card.
5. There will no longer be a fridge for entries. Plan accordingly.

- If an exhibitor wins Sweepstakes and Best of Show, they will only receive the Sweepstakes premium.

ENTRY FEES

Adults (18+) FREE
Youth (6 -17) FREE

ENTRY & RELEASE DATES

- Food entries will be accepted on Tuesday, August 6 from 7 a.m. – 10 a.m. in the Exhibit Hall. No late entries will be accepted! Limit of 3 entries in each category.
- Food items will be for display only. Food will be disposed of after the fair; only plates, containers, and ribbons will be available for pickup Monday, August 12 from 4 p.m. – 7 p.m.
- Exhibitors will be eligible to purchase (1) discounted day or week pass. Passes are available the day of entry ONLY. One per exhibitor.

CANNED FOODS ENTRY CRITERIA

Canning rules are based on safe food preservation guidelines from approved sources: National Center for Home Food Preservation (NCHFP), USU Extension, Pacific Northwest Extension, USDA, and Ball Canning. See <http://nchfp.uga.edu>, usu.edu, or www.freshpreserving.com. Exhibits should be canned using research-tested recipes, i.e., USDA, Ball, pectin brand name, or NCHFP guidelines issued 2009 or later. Processing adjustments for altitude, time, or pressure must be made and explained on entry label.

- Only products of home kitchens are eligible.
- Products entered must have been prepared (by the person entering them) since the last state/county fair. Older products will not be accepted.
- REQUIRED: All jars must be labeled with name of product, method (water bath or pressure), pack (hot or raw), length of processing time, pounds of pressure (if applicable), altitude, date, city, recipe source (see above), and when the dial gauge was last tested. (____ Date/ Year) attached to the bottom of jar. If sweeteners other than sugar are used, include on label. Labels are available in advance from the USU Extension Office or at time of entry.
- All entries must be in clean, standard canning jars (e.g., no mayo jars) with new, single-use two piece lids and rings.
- A one-quart or pint jar constitutes an

exhibit for fruit, vegetables, or meat.

- One standard-size canning jar constitutes an exhibit for preserves, conserves, pickles, and relishes based on recommendations from an approved recipe.
- One pint or 1/2 pint jar with lid constitutes an exhibit for jellies and jams.
- NO HOT ENTRIES!
- All fresh fruits, jams, jellies, pickles, and relishes must be processed in a boiling water bath and properly sealed. Entries processed in a steam canner will not be accepted.
- No frozen jams or wax sealed will be accepted. The presence of mold disqualifies a product.
- All meats and vegetables must be processed in a pressure canner.
- The exhibitor is requested to loosen the ring on the jar (for judges to examine the head space).
- Canned foods will not be opened.

CATEGORIES & CLASSES

A. CANNED FRUITS

(one pint or quart jar)

- Apples
- Applesauce
- Apricots
- Berries
- Cherries, pie
- Cherries, sweet
- Grapes
- Peaches
- Pears
- Plums
- Fruit cocktail
- Juice, any variety
- Sugarless, any variety
- Other

B. CANNED VEGETABLES

(one pint or quart)

- Asparagus
- Beans, sliced or whole
- Beets, sliced or whole
- Carrots
- Corn
- Peas
- Sauerkraut
- Hard squash or pumpkin
- Zucchini squash
- Tomatoes, stewed (with other vegetables)
- Tomatoes, plain
- Tomatoes, juice
- Other

C. CANNED JAMS, PRESERVES,

MARMALADES (one jelly, half-pint, or pint jar; **NO BABY FOOD JARS**; paraffin waxed seals accepted) **NO FREEZER JAMS OR JELLIES.**

- Apple butter
- Apricot
- Apricot butter
- Berry
- Cherry
- Choke cherry
- Peach
- Pear
- Plum
- Raspberry
- Rhubarb
- Strawberry
- Reduced sugar, any variety
- Other

D. JELLIES & SYRUPS

(one jelly, half-pint, or pint jar; **NO BABY FOOD JARS**; paraffin waxed seals accepted).

- Apple
- Apricot
- Berry
- Cherry
- Choke cherry
- Currant
- Grape
- Mint
- Peach
- Pear
- Plum
- Rhubarb
- Reduced sugar
- Fruit syrup
- Other

E. CANNED PICKLES & RELISHES

(one pint or quart)

- Beet pickles
- Bread and butter pickles
- Dill pickles
- Fruit pickles
- Lime pickles
- Mixed vegetable pickles
- Mustard pickles
- Pepper pickles
- Sweet pickles
- Watermelon pickles
- Beet relish
- Chow-chow relish
- Corn relish
- Cucumber relish
- Mixed vegetable relish
- Tomato (chili sauce)

17. Zucchini relish

18. Other

F. CANNED SAUCES & SOUPS (one pint ONLY)

1. Catsup (tomato)
2. Chili base
3. Spaghetti sauce
4. Salsa
5. Other

G. CANNED MEATS (one pint or quart)

1. Beef
2. Chicken or turkey
3. Fish
4. Minced meat
5. Pork
6. Wild game
7. Other

H. YEAST BREADS

a. Loaf breads (one loaf)

1. White
2. Whole wheat, (100%)
3. Whole wheat, mixture
4. Rye
5. Variety
6. French
7. Sour Dough
8. Other

b. Dinner rolls (four rolls)

1. White
2. Whole wheat
3. Rye
4. Variety (such as onion, cheese, etc.)
5. Other

c. Specialty bread (one loaf) **or rolls** (four rolls)

1. Fancy bread
2. Raised doughnuts
3. Cinnamon rolls
4. Croissants
5. Coffee cakes, nut rolls etc.
6. Swedish tea ring
7. Other

I. QUICK BREADS

1. Muffins, plain (four muffins)
2. Muffins, variety (four muffins)
3. Biscuits (four biscuits)
4. Pop overs (four pop overs)
5. Corn bread (four muffins, pieces or sticks)
6. Coffee Cakes
7. Loaf, any variety (one loaf)
8. Other

J. COOKIES (four cookies)

1. Bar

2. Refrigerator

3. Rolled

4. Dropped

5. Pressed

6. Filled

7. Reduced

8. Decorated

9. Brownies

10. Other

K. CAKES OR CUPCAKES (one cake or four cupcakes; may be frosted or unfrosted; if frosted, cakes and frosting will be judged as a unit)

1. Foam type cakes (sponge, chiffon, angel)
2. Fruit
3. Jelly roll
4. Pound cake
5. Cake doughnuts
6. Shortening type cakes (butter)
7. Other

L. DECORATED CAKES (judged on decoration, appearance, presentation, icing (texture), technique, color scheme.)

1. Wedding
2. Birthday
3. Holiday
4. Cupcakes
5. Other

M. PIES & PASTRIES (Homemade crusts only)

1. Fruit, fresh
2. Fruit, cooked
3. Custard
4. Chiffon
5. Main dish
6. Filo (phyllo) pastries
7. Cream puffs
8. Cheesecakes
9. Cream
10. Other

N. CANDIES (four pieces)

1. Caramels
2. Divinity
3. Fudge
4. Jellies
5. Hard candy or suckers
6. Nut brittles (any variety)
7. Nut clusters
8. Nut rolls
9. Pulled mints
10. Taffy
11. Toffee
12. Popcorn/Cereal
13. Other

O. 5-STAR CANNING

This entry category is for those who would like to enter five (5) canned items as a unit to show excellence in the canned foods area. These entries must contain five canned items, consisting of one item each from any five of the seven categories. The five items will constitute one entry; entry fee is FREE. A \$50 award awaits the winner in this event! **NOT ELIGIBLE FOR SWEEPSTAKES OR BEST OF SHOW.**

P. 4-STAR BAKING

This entry is for those who would like to enter four (4) baking items as a unit to show excellence in the baked food area. There must be one of each of the following types of baked foods: 1) Pie (any kind 1 or 2 crust), 2) Loaf bread (white or wheat), 3) Frosted cake and 4) Cookies (four). The four items will constitute one entry; entry fee is FREE. A \$50 award awaits the winner in this event! **NOT ELIGIBLE FOR SWEEPSTAKES OR BEST OF SHOW.**

JUDGING CRITERIA

CANNED FOODS

- a. Appearance
- b. Liquid
- c. Pack
- d. Container
- e. Seal
- f. Processing

BAKED FOODS

- a. Outside appearance
- b. Inside appearance
- c. Flavor
- d. Aroma
- e. Texture

CANDIES

- a. Appearance
- b. Color
- c. Texture
- d. Consistency
- e. Flavor
- f. Smoothness
- g. After taste
- h. Presentation

DECORATED CAKES

- a. Appearance and presentation
- b. Icing (texture)
- c. Technique
- d. Color scheme

JUDGING

Exhibits will be judged according to the Danish System. The judges will be instructed to award ribbons to all entries. If no competition exists and an article is not worthy of a blue ribbon, the judge may award red or white ribbon placing according to their judgment.

AWARDS & PREMIUMS

Blue, red, and white ribbons will be awarded according to the Danish System in all divisions.

Premiums awarded for **Youth and Disabled** will be:

Blue Ribbons	\$3
Red Ribbons	\$2
White Ribbons	\$1

Premiums awarded in **Adult Division** will be:

One **BEST-OF-SHOW** will be given \$25 cash and/or gift certificates in each category.

One **JUDGES CHOICE** will be given \$50. Judge will award to entry they feel best entertained, inspired, and impressed them the most.

One award will be given **in memory of Carla Staples** for \$50. This award will be chosen by one of Carla's family members in honor of her involvement with the Weber County Fair for many years.

One **SWEEPSTAKES** will be given \$100.

NEEDLE ARTS

Superintendent: Lori Knight, (801) 648-8934

REGULATIONS

1. Soiled items will be disqualified for judging.
2. The majority of the work on articles entered in this division must be completed by hand, except for machine knitted items. Articles with the majority of work completed by machine will be judged in the Fabric Arts Division.
3. All items must have been completed in the 2023-2024 season.
4. Unfinished work will be disqualified.
5. Every article which is to be hung, must be securely mounted and ready to be hung with wire.
6. **ONLY** the needle work portion of exhibit will be judged.
7. If an exhibitor wins Sweepstakes and Best of Show, they will only receive the Sweepstakes premium.

ENTRY FEES

Adults (18+) FREE

Youth (6 -17) FREE

ENTRY & RELEASE DATES

1. Entries will be accepted on Monday, August 5, from 1 p.m. – 8 p.m. No late entries will be accepted!
2. Release of exhibits and ribbons will be Monday, August 12, from 4 p.m. – 7 p.m. **ABSOLUTELY NO ENTRIES WILL BE RELEASED PRIOR TO THIS TIME.** Any items not claimed by this time will be donated to a local charity.
3. Exhibitors will be eligible to purchase (1) discounted day or week pass. Passes are available the day of entry **ONLY**. One per exhibitor.

CATEGORIES & CLASSES

A. SMALL HOUSEHOLD LINENS and/or ACCESSORIES

a. Doilies, Placemats, Centerpieces, Vanity Sets, Bells, Pulls, Bookmarks, Hankies, Pin Cushions, etc.

1. Knit
2. Crochet
3. Tatt
4. Hardanger
5. Embroidery
6. Netting
7. Cut work
8. Appliqué
9. Quilted (whole cloth and pieced)
10. Pieced
11. Woven
12. Other

b. Kitchen Towels

1. Embroidery
2. Appliqué
3. Swedish weaving
4. Crochet
5. Knit
6. Dishtowels cross-stitch
7. Dishtowels embroidery
8. Other

c. Pillows / Pillow cases (set of 2)

1. Crochet or Knit
2. Hand Embroidery
3. Needlepoint
4. Crewel embroidery
5. Woven
6. Latch hooked
7. Crocheted
8. Cut work
9. Other

B. TABLE CLOTHS (36" X 36" or larger)

1. Knit
2. Crochet
3. Tatt
4. Hardanger
5. Embroidery
6. Cut work
7. Appliqué
8. Woven
9. Holiday
10. Cross-stitch
11. Placemats
12. Other

C. AFGHANS, ALL SIZES

1. Knit, plain (uniform pattern throughout)
2. Knit, fancy (multi-color, multi-design, multi-panels, etc.), 3 or more different variety of stitches.
3. Crochet, plain (uniform pattern throughout)
4. Crochet, fancy (multi-color, multi-design, multi-panels, etc.), 3 or more
5. Ripple
6. Mile-a-minute
7. Granny square
8. Afghan stitch, plain
9. Embroidered crochet, afghan stitch, or knit
10. Hairpin or Broomstick lace
11. Woven, on loom
12. Woven, off loom
13. Embroidered whole cloth
14. Machine knit
15. Swedish Weaves
16. Other

D. RUGS, ALL SIZES

1. Braided
2. Crochet, rag
3. Crochet, yarn
4. Hooked
5. Latch hooked
6. Woven, on loom
7. Woven, off loom
8. Hand Woven
9. Other techniques not listed above

E. INFANT CLOTHING & FASHION

ACCESSORIES (UP TO TWO YEARS)

1. Accessories (hats, bibs, mittens, booties)
2. Baptismal or christening outfits
3. Dresses
4. Afghan
5. Sweater, poncho, or jacket
6. Outfits (two or more pieces)

7. Machine knit items (any kind)
8. Burp cloths and blankets
9. Other

F. CHILDREN CLOTHING & FASHION ACCESSORIES (AGES 3 TO 11 YEARS)

1. Accessories (hats, mittens, gloves, scarves, slippers)
2. Dresses
3. Afghan
4. Sweaters, poncho, or jacket
5. Outfits (two or more pieces)
6. Machine Knitting
7. Other

G. ADULT CLOTHING / FASHION ACCESSORIES (12 AND OLDER)

1. Accessories
2. Dresses
3. Sweaters
4. Coats or jackets
5. Vests
6. Stoles, ponchos, or capes
7. Outfits (two or more pieces)
8. Other

H. FRAMED STITCHERIES

1. Crewel Embroidery
2. Ribbon Embroidery
3. Bunka
4. Hardanger
5. Woven

I. WALL HANGINGS Every article which is to be hung, must be securely mounted and ready to be hung with wire.

1. Needle point
2. Cross stitched
3. Latch Hooked
4. Long Stitch
5. Other Technique

J. CROSS STITCH

1. Original Design (include drawings and description)
2. Landscape
3. Animals
4. Holiday
5. Sayings and Samplers
6. Beaded or Embellished
7. Props
8. Floral
9. Other

K. PURSES

1. Hand embroidery
2. Cross stitch
3. Knit
4. Crochet
5. Woven
6. Tatting

L. MISCELLANEOUS ITEMS

1. Toy
2. Holiday Items
3. Unique Items
4. Doll Clothing
5. Bookmark
6. Plastic Canvas
7. Other

JUDGING CRITERIA

1. Quality of workmanship
2. Suitability of material for purpose
3. Harmony and design
4. Appearance and presentation

JUDGING

Exhibits will be judged according to the Danish System. The judges will be instructed to award ribbons to all entries. If no competition exists and an article is not worthy of a blue ribbon, the judge may award red or white ribbon placing according to their judgment. A needle art attendant will accompany each judge.

AWARDS & PREMIUMS

Blue, red, and white ribbons will be awarded according to the Danish System in all divisions.

Premiums awarded for **Youth and Disabled** will be:

- Blue Ribbons \$3
- Red Ribbons \$2
- White Ribbons \$1

Premiums in **Adult Division** will be:

- One **BEST-OF-SHOW** will be given \$25 cash and/or gift certificates in each category.
- One **JUDGES CHOICE** will be given \$50.
- One **SWEEPSTAKES** will be given \$100.

QUILTED ARTS

Superintendents:
Ginny Dominguez, (801) 644-6521
(please text before calling)

DIVISIONS

- Hand Quilted
- Large Machine Quilted
- Junior Division
- T-shirt Quilts

REGULATIONS

1. All quilted items must have been completed in 2023-2024 season.
2. No tied quilts allowed.

3. All pieced, appliquéd, or embroidered quilts must have three layers.
4. The majority of the work on articles entered in the Hand Quilted Division must be completed by hand.
5. All hangings must be securely mounted and ready to be hung (no rods).
6. All entries must have finished edges and bound.
7. Beginning quilters must have less than 3 years quilting experience.
8. Intermediate quilters must have at least 3 years experience, but not more than 20 years experience.
9. Golden quilters must have more than 20 years of quilting experience.
10. All original designs must include drawing drafts, and patterns must be turned in at time of entry.
11. All items to be specified in area to be judged at time of entry such as: Beginner, Golden, Original, Disabled, etc.
12. One entry per category will be judged. Additional entries will be for display only.
13. If an exhibitor wins Sweepstakes and Best of Show, they will only receive the Sweepstakes premium.

ENTRY FEES

Adults (18+) FREE
Youth (6 -17) FREE

ENTRY & RELEASE DATES

1. Entries will be accepted on Monday, August 5, from 1 p.m. – 8 p.m. No late entries will be accepted!
2. Release of exhibits and ribbons will be Monday, August 12, from 4 p.m. – 7 p.m. **ABSOLUTELY NO ENTRIES WILL BE RELEASED PRIOR TO THIS TIME.** Any items not claimed by this time will be donated to a local charity.
3. Exhibitors will be eligible to purchase (1) discounted day or week pass. Passes are available the day of entry **ONLY.** One per exhibitor.

CATEGORIES

A. BEGINNING QUILTER lap/twin (52"x 87")

1. Pieced
2. Appliqued
3. Machine Embroidery
4. Whole Cloth (one piece)

B. BEGINNING QUILTER queen/king (90"x 120")

1. Pieced
2. Appliqued

3. Machine Embroidery
4. Whole Cloth (one piece)

**C. INTERMEDIATE QUILTER
lap/twin (52"x 87")**

1. Pieced
2. Appliquéd
3. Machine Embroidery
4. Whole Cloth (one piece)

**D. INTERMEDIATE QUILTER
queen/king (90"x 120")**

1. Pieced
2. Appliquéd
3. Machine Embroidery
4. Whole Cloth (one piece)
5. GOLDEN QUILTER
lap/twin (52"x 87")
6. Pieced
7. Appliquéd
8. Machine Embroidery
9. Whole Cloth (one piece)

**E. GOLDEN QUILTER
queen/king (90"x 120")**

1. Pieced
2. Appliquéd
3. Machine Embroidery
4. Whole Cloth (one piece)

F. BABY QUILTS

1. Pieced
2. Appliquéd
3. Machine Embroidery
4. Whole Cloth (one piece)

G. HAND QUILTS

1. Pieced
2. Appliquéd
3. Machine embroidery (large)
4. Whole Cloth (one piece)
5. Hand quilted

**H. ORIGINAL DESIGN
(Pattern must accompany piece)**

I. OTHER MISC. OR UNIQUE ITEM(S)

JUDGING CRITERIA

1. Quality of workmanship.
2. Suitability of material for purpose.
3. Harmony, design, and colors.
4. Appearance and overall presentation.

JUDGING

Exhibits will be judged according to the Danish System. The judges will be instructed to award ribbons to all entries. If no competition exists and an article is not worthy of a blue ribbon, the judge may award red or white ribbon placing according to their judgment.

AWARDS & PREMIUMS

Blue, red, and white ribbons will be awarded according to the Danish System in all divisions.

Premiums awarded for Youth and Disabled will be:

Blue Ribbons	\$3
Red Ribbons	\$2
White Ribbons	\$1

Premiums in **Adult Division** will be:

- One **BEST-OF-SHOW** will be \$25 cash and/or gift certificates in each category.
- One **JUDGES CHOICE** will be given \$50.
- One **SWEEPSTAKES** will be given \$100.

PHOTOGRAPHY

Superintendent:
Kristie Moss, (801) 710-0789
kristiemoss@gmail.com

PHOTOGRAPHY REGULATIONS

1. Each photographer will be limited to 5 photographs.
2. Pictures must have been taken within the last 2 years and not previously exhibited in the Weber County Fair.
3. Entry is open to all professional and amateur photographers who are residents, resident students, or military in Weber County.
4. All entries must conform to all size and preparation requirements listed herein.
5. The superintendent has the right to jury photos that do not meet the standards of the fair.
6. If an exhibitor wins Sweepstakes and Best of Show, they will only receive the Sweepstakes premium.

ENTRY FEES & SIZE REQUIREMENTS

PROFESSIONAL – Entry Fee: FREE

Open to individuals that are professional photographers or deem their work to be on par with such. Up to 5 prints – foam core mount must be 16" x 20" with print image size 16"x 20" or foam core mount must be 16" x 24" with print image size 16"x 24"

ADVANCED AMATEUR – Entry Fee: FREE

Open to individuals that are serious amateurs or experienced photographers. Up to 5 prints – foam core mount must be 11" x 14" with print image size 11" x 14" or foam core mount 11" x 16" with print size 11" x 16".

AMATEUR – Entry Fee: FREE

Open to individuals ages 18 and older. Up to 5 prints –foam core mount must be 8" x 10"

with print image size 8" x 10" or foam core mount 8" x 12" with print image size 8" x 12".

YOUTH – Entry Fee:

Open to youth age 6-17. Up to 5 prints – foam core mount 8"x 10" with print image size 8"x 10" or foam core mount 8"x 12" with print image size 8"x 12"

ENTRY & RELEASE DATES

1. Entries will be accepted Monday, August 5, from 1 p.m. - 8 p.m. at the Weber County Fairgrounds in the Exhibit Hall.
2. Entries must be reclaimed following the Fair on Monday, August 12, from 4 p.m. – 7 p.m. (no exhibits can be picked up prior to this time).
3. Exhibitors will be eligible to purchase (1) discounted day or week pass. Passes are available the day of entry ONLY. One per exhibitor.

LOT

- A. Action/Sports
- B. Animals/Pets (domestic)
- C. Wildlife
- D. Commercial & Industrial
- E. Creative Art/Special Effects
- F. Flowers
- G. Journalistic/Story Telling
- H. Macro (close up)
- I. Portraiture
- J. Scenic/Landscape
- K. Still Life
- L. Wedding

PREPARATION OF EXHIBITS

Due to methods used in display of all photographs, the following will be observed by judges and participants as display requirements:

1. All entries must be permanently affixed to a mount board that is approximately 1/8" to 1/4" thick., entries with incorrect size mounting will be rejected at check in (standard mattes will be rejected on check in). NO hanging devices or other protrusions on the back or front of prints. NO front (over) "mattes." Prints must be permanently affixed to the mounting board. Do not use double sided tape. Prints that fall off due to poor mounting will not be repaired, may not be judged, and will be removed from the exhibit.
2. The size of the entry's mount board varies by class and is defined in the class description. The size of the mount board cannot be varied from that shown in the class description.

- All images must be original and may not include elements produced by someone else. The original image(s) must have been made by the exhibitor on photographic emulsion or acquired with a digital camera. Upon submitting an entry, the exhibitor certifies the work is their own and has been taken within the last two years. The fair assumes no liability for any misuse of copyright by the exhibitor.
- Processing and printing may be done commercially or by the exhibitor.
- The final work must be on photographic or electronic print material, mounting required.
- Digital prints may not contain non-photographic elements.
- Exhibitors must print neatly on the back of each photograph (using a self-sticking address label is suggested):
 - Exhibitors name
 - Exhibitors phone number
 - Class group
 - Title of photograph

No information will be allowed on the front of photograph or mounting board.

JUDGING

Entries will be prejudged and those not meeting the standards of the exhibit will not be hung. Judging will be based on the following: presentation, composition, photographic technique, and originality.

AWARDS & PREMIUMS

Blue, red, and white ribbons will be awarded according to the Danish System in all divisions.

Premiums awarded for **Youth and Disabled** will be:

Blue Ribbons	\$3
Red Ribbons	\$2
White Ribbons	\$1

Premiums in **Adult Division** will be:

- One **BEST-OF-SHOW** will be given \$25 cash and/or gift certificate in each category.
- One **JUDGES CHOICE** will be given \$50.
- One **SWEEPSTAKES** will be given \$100.



FINE ARTS

Superintendent:

Tara Savage, jutarasavage@yahoo.com

REGULATIONS

- Each artist will be limited to one (1) piece, per category.
- All items must have been completed in the 2023-2024 season. This is not a juried show.
- Work done in media other than the listed categories will be placed by the superintendent into a category.
- All pictures must be securely framed and equipped with screw eyes and wires, no string or cords. The receiving committee is instructed to refuse art work not meeting this requirement. Youth artwork can be either matted and framed or just matted and be acceptable.
- If an exhibitor wins Sweepstakes and Best of Show, they will only receive the Sweepstakes premium.

ENTRY FEES & DIVISIONS

Adults (18+) FREE

Youth (6 -17) FREE

ENTRY & RELEASE DATES

- Entries will be accepted on Monday, August 5, from 1 p.m. – 8 p.m. No late entries will be accepted!
- Release of exhibits and ribbons will be Monday, August 12, from 4 p.m. – 7 p.m. **ABSOLUTELY NO ENTRIES WILL BE RELEASED PRIOR TO THIS TIME.** Any items not claimed by this time will be donated to a local charity.
- Exhibitors will be eligible to purchase (1) discounted day or week pass. Passes are available the day of entry **ONLY**. One per exhibitor.

CATEGORIES & CLASSES

A. OIL PAINTING

- Still Life
- Portraits
- Landscapes/Seascapes/Cityscapes
- Other

B. ACRYLIC PAINTINGS

- Still Life
- Portraits
- Landscapes/Seascapes/Cityscapes
- Other

C. TRANSPARENT MEDIUM

- Still Life
- Portraits
- Landscapes/Seascape/Cityscapes
- Other

D. GRAPHIC ARTS

- Serigraph (Silk Screen)
- Etching (or other intaglio)
- Block Print
- Lithographs
- Collage
- Computer Generated Images
- Other

E. DRAWING

- Graphite, Charcoal, Ink
- Pastels
- Markers
- Other

JUDGING CRITERIA

- Quality of workmanship
- Suitability of material for purpose
- Harmony and design
- Appearance and presentation

JUDGING

Exhibits will be judged according to the Danish System. The judges will be instructed to award ribbons to all entries. If no competition exists and an article is not worthy of a blue ribbon, the judge may award red or white ribbon placing according to their judgment.

AWARDS & PREMIUMS

Blue, red, and white ribbons will be awarded according to the Danish System in all divisions.

Premiums awarded for **Youth and Disabled** will be:

Blue Ribbons	\$3
Red Ribbons	\$2
White Ribbons	\$1

Premiums in **Adult Division** will be:

- One **BEST-OF-SHOW** will be given \$25.
- One **JUDGES CHOICE** will be given \$50.
- One **SWEEPSTAKES** will be given \$100.

CRAFT ARTS

Sponsored by

The Insurance Center, Shawn Iverson

Superintendent:

Abby Wyatt, (435) 239-4104

abby.wyatt1023@gmail.com

REGULATIONS

- Entry limits – each exhibitor may enter up to 3 items in each category.
- Craft exhibits made from a kit will be accepted. The exhibitor must state on entry form if the exhibit is from a kit and

- what portion is made from the said kit.
- Every article which is to be hung must be securely mounted and ready to be hung with wire or hanger attached.
 - Articles entered for competition must be the work of the exhibitor.
 - Superintendents and judges will not be allowed to enter exhibits, except for display only.
 - The superintendent has the right to reject any entry deemed unsuitable for exhibition, i.e., articles of questionable or objectionable taste, soiled articles, entries better suited for another division, etc.
 - All articles will be subject to approval before entry by the department superintendent and/or category supervisors.
 - Special collections may be entered for display, only if space permits. Prior arrangements must be made with the superintendent.
 - SPECIAL GROUP DISPLAYS:** Groups will be displayed as space allows. This type of display is not limited to: Local School for the Deaf and Blind, Veteran's Hospital, nursing homes, special education, and other similar groups.
 - Items must not have been worn or used.
 - Fair is not responsible for projects damaged being moved or displayed.
 - If an exhibitor wins Sweepstakes and Best of Show, they will only receive the Sweepstakes premium.

ENTRY FEES & DIVISIONS

Adults (18+) FREE
Youth (6 -17) FREE

ENTRY & RELEASE DATES

- Entries will be accepted on Monday, August 5, from 1 p.m. – 8 p.m. No late entries will be accepted!
- Release of exhibits and ribbons will be Monday, August 12, from 4 p.m. – 7 p.m. **ABSOLUTELY NO ENTRIES WILL BE RELEASED PRIOR TO THIS TIME.** Any items not claimed by this time will be donated to a local charity.
- Exhibitors will be eligible to purchase (1) discounted day or week pass. Passes are available the day of entry **ONLY**. One per exhibitor.

CATEGORIES

- HOME DÉCOR**
- PALLET ART**
- LEATHER WORK**
- WOOD WORKING**
- WOOD CARVING / SCRIMSHAW**
- MODELS, ORIGINAL**
- METAL WORK**
(Indicate if from a kit -partially or completely)
- SNAP-TOGETHER CRAFTS**
This includes LEGOS, K'nex, and any other snap-together project.
 - Original design
 - Built from a kit
- CERAMICS & PLASTERCRAFT**
Note: Only one entry per exhibitor per class.
 - Handmade/Sculpted
 - Painted
- SILK & DRIED FLORAL**
- JEWELRY**
- SCULPTURES**
- SCRAPBOOKS & SCRAPBOOK PAGES**
Note: each page must be submitted in a plastic sheet protector. Each layout submitted should consist of either one or two 8-1/2" x 11" or 12" X 12".
- ART KITS**
- MISCELLANEOUS**

JUDGING

Exhibits will be judged according to the Danish System. A craft art attendant will accompany each judge.

AWARDS & PREMIUMS

Blue, red, and white ribbons will be awarded according to the Danish System in all divisions.

Premiums awarded for **Youth and Disabled** will be:

Blue Ribbons	\$3
Red Ribbons	\$2
White Ribbons	\$1

Premiums in **Adult Division** will be:

- One **BEST-OF-SHOW** will be given \$25 in each category.
- One **JUDGES CHOICE** will be given \$50.
- One **SWEEPSTAKES** will be given \$100.

FLOWERS AND PLANTS

Superintendent:
Wendy Wright, (801) 726-7408
paulwright801@yahoo.com

ENTRY FEES

Adults (18+) FREE
Youth (6 -17) FREE

ENTRY & RELEASE DATES

- Entries will be accepted on Tuesday, August 6 from 7 a.m. – 10 a.m. No late entries will be accepted.
- Release of exhibits and ribbons will be Monday, August 12, from 4 p.m. – 7 p.m. **ABSOLUTELY NO ENTRIES WILL BE RELEASED PRIOR TO THIS TIME.**
- Exhibitors will be eligible to purchase (1) discounted day or week pass. Passes are available the day of entry **ONLY**. One per exhibitor.

DIVISION GROUPING

- Fresh Flowers**
- House Plants**
- Patio Planters**
- Artistic Arrangements of Plants and/or Flowers**

FRESH FLOWER DIVISION PREPARATION & CARE OF CUT FLOWER

- Gather flowers after 3 p.m. or before sunrise.
- Cut with a long stem, generally just before they come into full bloom. Some flowers, such as the following, are exceptions: Gladiolus, when the first bud opens, Roses when buds are soft: Dahlias when blooms are fully open. Do not remove leaves.
- Groom entries carefully. Remove leaves that will be under water in the exhibit.
- Be sure the count is accurate and the correct amount required by the rules. In a collection of more than five stems, the judge will pick five blooms at random to judge your entry.
- FLOWERS are judged for uniformity in size and development.
- Only natural foliage on any plant will be allowed.
- The flower show superintendent has the right to refuse diseased or bug infested entries.

SCALE OF POINT FOR JUDGING CUT FLOWERS

Form, color, substance, abundance of Bloom.....	20%
Size, according to species or variety.....	20%
Foliage and stem.....	20%
Distinction of species or variety ...	20%
Condition.....	20%
Total.....	100%

Note: "Collection" equals 3 to 5 blooms.

CATEGORIES

- A. **Asters** – single bloom
- B. **Chrysanthemums** – collection
- C. **Dahlias** – single bloom
- D. **Daisies** – single bloom
- E. **Gladiolus** – single stalks
- F. **Lilies** – single bloom
- G. **Marigolds** – single bloom
- H. **Marigolds** – collection
- I. **Roses** – hybrid teas – 1 bloom
- J. **Roses** – floribundas – collection
- K. **Roses** – miscellaneous – 1 bloom
- L. **Roses** – miniatures – collection
- M. **Snap Dragons** – collection
- N. **Sunflowers** – single bloom
- O. **Zinnias** – collection
- P. **Zinnias** – dwarf – collection
- Q. **Miscellaneous** – single bloom (any other entry not listed)
- R. **Miscellaneous** – collection (any other entry not listed)

HOUSE PLANT DIVISION

Foliage must be clean, and not polished with oil or other plant preparation. Any exhibit with insects or disease will not be allowed in the show. NOTE: Please try to identify the plant before you enter it into the show.

Scale of point for judging house plants:

Form: exhibit is compared to perfection for its variety.....	20%
Color: vibrancy, brilliance, effect of temperature, light.....	20%
Substance: turgidity, firmness, vigor or freshness.....	20%
Balance: relationship of flower or leaf to stem, foliage.....	20%
Size: quality of bloom or plant growth.....	20%
Total.....	100%

CATEGORIES

- A. **Potted plants** – flowering
- B. **Potted plants** – foliage under 12" tall
- C. **Potted plants** – foliage – over 12" tall
- D. **African Violets**
- E. **Begonias**
- F. **Ferns**
- G. **Bonsai**
- H. **Succulent** – over 12" tall
- I. **Succulent** – under 12" tall
- J. **Potted plants** – collection (must be house plants and must be established and compatible)

PATIO PLANTERS DIVISION

Scale of point for judging house plants:

Form: exhibit is compared to perfection for its variety.....	20%
Color: vibrancy, brilliance, effect of temperature, light.....	20%
Substance: turgidity, firmness, vigor or freshness.....	20%
Balance: relationship of flower or leaf to stem, foliage.....	20%
Size: quality of bloom or plant growth.....	20%
Total.....	100%

ARTISTIC ARRANGEMENT DIVISION

1. All flowers and plants used in arrangement must have been grown and cared for by exhibitor.
2. No artificial flowers or plants used in arrangement.
3. Live plant material only. NO DRIED FLOWERS.

JUDGING

1. Exhibits will be judged blue, red, or white according to the Danish System.
2. No exhibitor will be allowed in the flower department during judging. Judges' decisions are final.
3. No added embellishments will be accepted with entry.
4. Premiums will only be paid in youth division.
5. Youth Division 6 -16 years of age. Amateur Division 17 years of age and older. Professional Division anyone who instructs or sells, or a Master Gardener.

AWARDS & PREMIUMS

Blue, red, and white ribbons will be awarded according to the Danish System. Premiums

awarded for **Youth and Disabled** will be:

Blue Ribbons	\$3
Red Ribbons	\$2
White Ribbons	\$1

Adult Division:

Best of Show
Rosette and \$25 Premium

Judges Choice
Rosette and \$50 Premium

Sweepstakes
Rosette and \$100 Premium

If an exhibitor wins Sweepstakes and Best of Show, they will only receive the Sweepstakes premium.

CROPS

Superintendent:

Helen Muntz, (801) 399-8204

helen.muntz@usu.edu

ENTRY FEES

Adults (18+) FREE

Youth (6 -17) FREE

ENTRY & RELEASE DATES

1. Entries will be accepted Tuesday, August 6, from 6 - 8 p.m. Entries will take place in the Exhibit Hall (**NEW LOCATION**).
2. Entries must be reclaimed Monday, August 12, from 4 -7 p.m. Any entries left after this time will be thrown away.
3. Exhibitors will be eligible to purchase (1) discounted day or week pass. Passes are available the day of entry ONLY. One per exhibitor.

REGULATIONS

All entries must be clean and presentable.

Judging is closed to exhibitors.

1. Entries must have been grown by the exhibitors.
2. All entries must be fresh. NO frozen entries will be accepted.
3. No entries unworthy of an award shall receive one, even though there may be no competition. Nor shall any entry receive a higher premium than its merits justify.
4. Exhibitors may enter one entry per class, with the maximum of 12 entries per person.
5. Only 2 exhibits may be entered in each class from one family residing at the same address.
6. If an exhibitor wins Sweepstakes and Best of Show, they will only receive the Sweepstakes premium.

CATEGORIES

A. FRUITS

- Class 1 Apples (5)
- Class 2 Apricots (5)
- Class 3 Blackberries (25)
- Class 4 Boysenberries (25)
- Class 5 Cherries (20)
- Class 6 Grapes (3 bunches)
- Class 7 Nectarines (5)
- Class 8 Peaches (5)
- Class 9 Pears (5)
- Class 10 Plums or Prunes (5)
- Class 11 Raspberries (25 berries)
- Class 12 Strawberries (15 berries)
- Class 13 Watermelon (1)
- Class 14 Pumpkins, ornamental (2)
- Class 15 Pumpkins (1 fruit)
- Class 16 Any other fruit (5 fruits) properly named

B. VEGETABLES

- Class 1 Artichoke (1)
- Class 2 Dry beans (1 pint in glass jar)
- Class 3 Green Beans (10 pods)
- Class 4 Snap beans (10 pods)
- Class 5 Lima beans (10 pods)
- Class 6 Beets (5) tops off
- Class 7 Broccoli (2 heads)
- Class 8 Cabbage (2 heads) trimmed
- Class 9 Carrots (5) tops off
- Class 10 Cantaloupe or Muskmelon (2)
- Class 11 Cauliflower (2 heads) trimmed
- Class 12 Celery (2 plants or bunches trimmed)
- Class 13 Corn, sweet (5 ears) husked
- Class 14 Popcorn (1 pint in glass jar)
- Class 15 Popcorn (5 ears husked)
- Class 16 Cucumbers, slicing (5)
- Class 17 Cucumbers, pickling (5)
- Class 18 Eggplant (2)
- Class 19 Garlic (5 bulbs)
- Class 20 Kale, Collards, or Mustard (1 bunch)
- Class 21 Kohlrabi (5 bulbs) leaves & roots removed
- Class 22 Lettuce (2 heads) trimmed
- Class 23 Onions (5 bulbs) dry, scales intact
- Class 24 onions, green (1 bunch) 10 per bunch
- Class 25 Okra (5)
- Class 26 Parsnips or Rutabagas (5) trimmed
- Class 27 Peas (10 pod)
- Class 28 Peppers, mild (3)

- Class 29 Peppers, hot (3)
- Class 30 Potatoes, russets (3)
- Class 31 Potatoes, red (3)
- Class 32 Potatoes, other (3)
- Class 33 radishes (2 bunches) 10-12 radishes per bunch
- Class 34 Rhubarb (3 stalks)
- Class 35 Summer squash, scallop (3)
- Class 36 Summer squash, yellow (3)
- Class 37 Summer squash, zucchini (3)
- Class 38 Summer squash, any other variety (3)
- Class 39 Winter squash, small varieties (2)
- Class 40 Winter squash, large varieties (1)
- Class 41 Winter squash, gourds (3)
- Class 42 Sunflower (1 head)
- Class 43 Swiss Chard (5 plants) roots attached
- Class 44 Spinach (5 plants) roots attached
- Class 45 tomatoes, pear (5)
- Class 46 Tomatoes, green (5) tops on
- Class 47 Tomatoes, ripe (5) tops off
- Class 48 Tomatoes, cherry (5)
- Class 49 Tomatillos (10)
- Class 50 Turnips (5) leaves trimmed 1"- 2"
- Class 51 Any Other Vegetable, properly named

C. FIELD CROPS

- Class 1 Small grains, threshed, wheat, oats or barely (1 pint in glass jar)
- Class 2 Small grains sheaf (3" bundled tied in 3 places)
- Class 3 Field corn sheaf (minimum 3 stock)
- Class 4 Field corn ears (5 ears) husked
- Class 5 Alfalfa sheaf (3" bundled tied in 3 places)
- Class 6 Any other crop properly named

D. LARGEST SPECIMENS

- Class 1 Onion
- Class 2 Pepper
- Class 3 Potato
- Class 4 Pumpkin
- Class 5 Squash - Summer
- Class 6 Squash - Winter
- Class 7 Sunflower
- Class 8 Tomato
- Class 9 Watermelon
- Class 10 Any other largest specimen

E. GARDEN COLLECTION

- Class 1 Exhibit of 5 or more types of

fruit, nuts, or vegetables arranged in a box, basket or plate.

F. HERBS

All herbs must be fresh and in container(s).

- Class 1 Basil (5 stems)
- Class 2 Cilantro (5 stems)
- Class 3 Chives (5 stems)
- Class 4 Dill/Fennel (5 stems)
- Class 5 Lavender (5 stems)
- Class 6 Lemongrass (1 bundle)
- Class 7 Marjoram/Oregano (5 stems)
- Class 8 Mints (5 stems)
- Class 9 Parsley (5 stems)
- Class 10 Rosemary (5 stems)
- Class 11 Sage (5 stems)
- Class 12 Tarragon (5 stems)
- Class 13 Thyme (5 stems)
- Class 14 Any other herb, properly named

G. MISCELLANEOUS

- Class 1 Honey (1 pint in glass jar)
- Class 2 Honey (1 honey comb)
- Class 3 Nuts (5)
- Class 4 Any other properly named miscellaneous crop

JUDGING

1. Exhibits will be judged according to the Danish System.
2. All produce should be at an edible stage of maturity. Produce will be judged on uniformity, maturity, condition, size, and trueness to type.
3. Entries must be clean and free of debris, except where noted.

AWARDS & PREMIUMS

Youth and Disabled Division: Ribbon(s) will be awarded according to the Danish System

Blue Ribbons	\$3
Red Ribbons	\$2
White Ribbons	\$1

Adult Division:

Best of Show:

Rosette and a \$25 premium in each category.

Judges Choice:

Rosette and a \$50 premium.

Sweepstakes:

Rosette and a \$100 premium.





WEBER COUNTY 4-H

David Widdison, 4-H Coordinator
Naomi Brower, 4-H/FCS Faculty
Kirsten Jenson, Weber Co. 4-H Office
801-399-8202

GENERAL RULES

The following rules and regulations shall apply to all sections:

1. All 4-H exhibitors, including Cloverbuds (K – 2nd grade), must be enrolled in Weber County 4-H and projects selected by June 1.
2. Exhibits must have been completed in the current 4-H year (Sept. 2023 – August 2024).
3. 4-H members must be enrolled in the project in which the exhibit is entered.
4. To exhibit for premium monies, 4-H members must be at least 8 years old AND in 3rd grade as of September 1, 2023.
5. Cloverbuds are not eligible for premium monies but will receive a participation ribbon.
6. 4-H members must PRE-ENTER their exhibits **by July 26, 2024**.
 - A. Exhibits not pre-entered will be dropped one ribbon placing and will forfeit the opportunity to be selected to exhibit at the Utah State Fair.
 - B. Entries must be submitted online beginning July 1 through July 26 through the fair entry system. Contact 801-399-8202 for details
 - C. If a youth has special needs, please contact the 4-H office after pre-entering.
7. 4-H grade classifications as of September 1, 2023 are:

Cloverbuds:	K – 2nd grade
Juniors:	3rd – 5th grade
Intermediate:	6th – 8th grade
Senior:	9th – 12th grade
8. Number of entries allowed per exhibitor:
 - A. 4-H members (excluding Cloverbuds) will be allowed to enter more than one exhibit per division, but **no more than one exhibit per class** within the division. Exceptions to this rule are Food Preservation and Gardening (i.e., three bottles of different fruit and three bottles of different vegetables are allowed). Participant may enter two exhibits in each class but **MUST be different varieties.**
 - B. Exhibits must **CLEARLY** fit into the appropriate Division and Class.
 - C. The total number of 4-H indoor

- exhibit entries per
9. Bringing entries to the Exhibit Hall (includes gardening/crops) and entry pick up:
 - A. Entries will be accepted August 5, 2024, from 11:00 a.m. – 5:30 p.m. Entry tags will be attached at this time and items placed for judging.
 - B. All exhibits **MUST** be picked up from the Exhibit Hall on Monday, August 12, 2024, from 4:00 p.m. – 7:00 p.m.
 - C. Baked goods will NOT be returned, but ribbons awarded **MUST** be picked up on Monday, August 12, 2024, from 4:00 p.m. – 7:00 p.m.
 - D. The 4-H office will not be responsible for exhibits
 - E. not claimed at this time.
 10. Premium monies **MUST** be redeemed by August 31, 2024, at the Premium Bank located in the Golden Spike Arena
 - A. Premium monies are paid as follows:

Blue	\$3
Red	\$2
White	\$1

The following are requirements and information for exhibits:

- Posters must be 22" X 33" or smaller.
Notebook binders must be 2 inches or smaller.
Displays must be 4' X 4' or smaller and be free standing.
Collection boxes must be 325 square inches for bottom measurement or smaller and glass covers must open at the top or side of the box; the glass must be secured so that glass will not move when the box is properly displayed at the fair.
Food items need to be of a quality to keep for a week. **Food items must not require refrigeration.** Frozen food products are not acceptable. Do not send food items which will spoil quickly. Bread exhibits may be made by the traditional method or with a bread machine.
Exhibits must be well made so they are stable enough to be moved.
Baked products and gardening exhibits will not be returned without prior special arrangement.
Items to be returned (hangers, pie pans, cake stands, etc.) must be marked with name of exhibitor.
Please indicate if the item was made from a kit.
Exhibits should not be school work.

If **part** of it was done in school, please include a note explaining what additional things the 4-H member did to make it also into a 4-H project.

DIVISION A – AGRICULTURE, ENVIRONMENTAL, AND ANIMAL SCIENCE

DIVISION AA – Agriculture & Animal Science

- Class 1: **AGRISCIENCE POSTER** – Poster that depicts your agriscience project, should include the scientific method, hypothesis, materials & methods, results, and discussion.
- Class 2: **ANIMAL SCIENCE POSTER** – Educational poster with any animal science related topic including, but not limited to, horse, livestock, or companion animal.
- Class 3: **HANDMADE EQUIPMENT/SUPPLIES** – Any item that you have made that relates to your agriculture or animal project. Includes, but not limited to, halters, feeders, stands, tack boxes, toys, or habitats.
- Class 4: **VIDEO DEMONSTRATIONS** – Recorded visual demonstrations related to your animal science project. Includes, but not limited to, Utah 4-H Pet Show Demonstrations, mini livestock workshops, or similar educational demonstrations.
- Class 5: **COLLECTIONS** – Any items collected and displayed. May include, but is not limited to, model horses, photo albums, equipment sets, and similar items. Collections must be labeled.
- Class 6: **OTHER** – Any other items related to agriculture and animal science that do not fit into any other class.

DIVISION AB – Natural Resources and Outdoor Education

- Class 1: **POSTER PRESENTATION** – Educational poster with any natural resource or outdoor education related topic.
- Class 2: **HANDMADE EQUIPMENT/SUPPLIES** – Any item that you have made that relates to natural resources or outdoor education. Includes, but not limited to, outdoor product designs, camp sets, and tools.
- Class 3: **COLLECTIONS** – Any items collected and displayed. May include, but is not limited to, rocks, sands, artifacts, dried flowers, entomology, photo albums, and

4-H ITEMS SELECTED FOR UTAH STATE FAIR:

- A. Entries selected for the Utah State Fair will be identified with a purple state fair sticker.
- B. Non-perishable entries selected for the state fair will not be returned; they will be packed up and taken to the state fair.
- C. Food items will need to be resubmitted to the 4-H office for the state fair by 5:00 p.m. on August 27, 2024.
- D. Because of differing harvest schedules between the county and state fair, ANY current 4-H member (3rd-12th grade) is eligible to enter gardening exhibits at the state fair.
- E. Garden entries MUST be state fair quality. If an entry is not deemed to be state fair quality, it will not be sent.
- F. Garden entries will need to be submitted to the 4-H office on September 4, 2024 between 8:00 a.m. and 10:00 a.m.
- G. All garden entries must come in prepared for display on a sturdy plate and be able to be transported.

similar items. Collections must be labeled.

Class 4: **OTHER** – Any other projects related to natural resources and outdoor education that do not fit into any other class.

DIVISION B – ART

DIVISION BA – Arts and Crafts

- Class 1: **BOONDOGGLE** – Item made primarily of boondoggle (e.g. keychain, figure, etc.)
- Class 2: **METAL** – Item cut from metal, made primarily of metal, and/or pieced/welded together with metal
- Class 3: **PAINTED WOOD CRAFTS** – Item made of wood that was painted by the exhibitor
- Class 4: **VINYL LETTERING/IMAGERY** – Item created using vinyl
- Class 5: **LEGOS, FROM KIT** – Legos, K'nex, etc. that were built from a kit
- Class 6: **LEGOS, ORIGINAL DESIGN** – Legos, K'nex, etc. that were built into an original design
- Class 7: **GLASS ETCHING** – Glass item that was etched by exhibitor
- Class 8: **MELTING BEADS** – Item that has been created using melting beads (see pixilations in Division EC, Classes 7 & 8 for more entry options)
- Class 9: **BEADING** – Item made from craft beads that is not jewelry (pony beads, perler beads, diamond art, etc.)
- Class 10: **JEWELRY** – Item(s) of any type of jewelry (necklace, bracelet, ring, earring, etc.) made from any material
- Class 11: **LEATHER CRAFT** – Stamping, carving, tooling, lacing or stitching on a leather item
- Class 12: **PAPER CRAFT** – Stationary,

origami, paper dolls, scrapbooking, etc.

- Class 13: **STENCILING** – Item that has been created using stenciling techniques (sign, wall hanging, dish towel, article of clothing, etc.)
- Class 14: **PLASTIC CANVAS** – Decoration, picture frame, basket, or other item created with plastic canvas
- Class 15: **DUCT TAPE** – Item that has been created using duct tape
- Class 16: **OTHER** – Any item crafted by the exhibitor that does not fit into the above categories

DIVISION BB – Fine Arts

- Class 1: **CERAMICS** – Painted or glazed ceramics
- Class 2: **POTTERY** – Any piece created by exhibitor using pottery techniques
- Class 3: **SCULPTURE** – Paper or Paper Mâché
- Class 4: **SCULPTURE** – Wire
- Class 5: **SCULPTURE** – Clay
- Class 6: **SCULPTURE** – Made from any other medium not listed above
- Class 7: **DRAWING** – Pencil/Sketch. Can be colored or lead pencil
- Class 8: **DRAWING** – Oil Pastel
- Class 9: **DRAWING** – Chalk
- Class 10: **DRAWING** – Marker, Pen/Ink, Crayon or any other medium not listed above
- Class 11: **DRAWING PORTFOLIO** – Collection of at least five drawings
- Class 12: **PAINTING** – Watercolor
- Class 13: **PAINTING** – Acrylic
- Class 14: **PAINTING** – Oil
- Class 15: **PAINTING** – From a Kit / Paint-by-Number
- Class 16: **CALLIGRAPHY** – Any item demonstrating an exhibitor's calligraphy/penmanship
- Class 17: **MIXED MEDIA** – Work of art

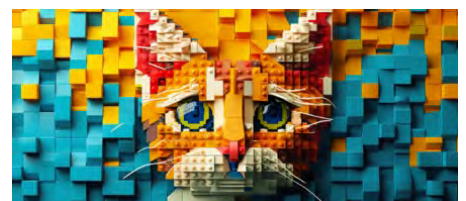
utilizing more than one form of media (oil pastel, chalk, paper, watercolor, natural sources, etc.)

- Class 18: **GRAPHIC/DIGITAL ARTS** – Work of art created utilizing computer technology; hand drawn
- Class 19: **GRAPHIC/DIGITAL ARTS** – Work of art created utilizing computer technology; using templates, artwork created by others, or artificial intelligence (AI)
- Class 20: **WRITING** – Poem, short story, or other written work
- Class 21: **PERFORMING ARTS** – Any dance, vocal, composed music, acting piece, etc. created by the exhibitor. **Must be submitted by shareable link ONLY, i.e. private YouTube account (no CD's or flash drives are accepted)**
- Class 22: **FILM** – Any film project created by the exhibitor. **Must be submitted by shareable link ONLY, i.e. private YouTube account (no CD's or flash drives are accepted)**
- Class 23: **OTHER** – Any project that does not fit into the above categories

DIVISION BC – Photography

All Photography should be mounted or framed in a 4"x 6", 5"x 7", or 8"x 10" size

- Class 1: **LANDSCAPE**
- Class 2: **PERSON/PORTRAIT**
- Class 3: **ANIMAL**
- Class 4: **ACTION**
- Class 5: **MACRO/CLOSE UP**
- Class 6: **ARCHITECTURE**
- Class 7: **ASTROPHOTOGRAPHY**



- Class 8: **PHOTO PORTFOLIO** – Collection of at least five photos
- Class 9: **4-H PROMOTION** – Photos of 4-H projects, community service, activities/events, etc.
- Class 10: **OTHER** – Photo that includes subject matter not detailed above

DIVISION C – PERSONAL DEVELOPMENT

DIVISION CA – Youth Leadership & Civic Engagement

- Class 1: **LEADERSHIP** – Exhibit that shows learning about leadership skills and influencing others in a positive way
- Class 2: **CIVIC EDUCATION** – Notebook, poster or other display that depicts the exhibitor's 4-H project related to government, history, culture, etc.
- Class 3: **CIVIC ENGAGEMENT** – Notebook, poster or other display that depicts the exhibitor's 4-H project related to civic responsibility and/or social justice, etc.
- Class 4: **SERVICE** – Exhibit that shows an experience in a service learning project
- Class 5: **OTHER** – Any display that depicts learning about leadership & civic engagement that does not fit into a class above

CLASS CB – Career Readiness

- Class 1: **CAREER PATHWAY** – Please provide a notebook, poster or any other item or display that depicts how your 4-H project is preparing you for a career. Please provide a brief description of the exhibit.
- Class 2: **CAREER READINESS SKILLS** – Please provide a notebook, poster, or any other item or display that depicts how your 4-H project is preparing you for one or more of the following topics: job interviews, resume development, scholarship applications, job applications, college applications, talent development, acting professionally, showing respect in the workplace, or reducing academic stress
- Class 3: **4-H PORTFOLIO** – 4-H Portfolios are the combination of a resume and cover letter

Resumes: The resume should represent a cumulative summary of the exhibitor's background, skills, and accomplishments. The exhibitor should summarize their 4-H experience by highlighting their project involvement, activities, awards/recognitions, leadership experiences,

and community service. Each year, the exhibitor will need to update their information, maintaining the most pertinent information over time. Content should be clearly identified as 4-H or non-4-H. Style of resume and formatting are at the discretion of the exhibitor. Resumes should include contact information, county, school grade, and year in 4-H. Maximum two pages.

Cover Letters: The cover letter should be a narrative to accompany the resume. When applying for different 4-H contests, leadership roles, etc. the cover letter should be tailored to the requirements of the application. Maximum one page.

Fair Objectives:

1. Where did you first learn about your 4-H project and how did you become involved?
2. What skills have you learned from your 4-H project this year and how will they be useful in the future?
3. What goals do you have for next year based on your 4-H project experience and your future plans?
4. How has 4-H helped you make decisions about your future?

DIVISION D – FAMILY CONSUMER SCIENCE & HEALTHY LIVING

DIVISION DA – Emergency Preparedness and Safety

- Class 1: Please provide a notebook, poster, or any other item or display that depicts your 4-H emergency preparedness or safety project. Please provide a brief description of the exhibit.

DIVISION DB – Family Consumer Science (Child Care, Interior Design, Finance)

- Class 1: **TOY, PUPPET, or STORY** – Created by the exhibitor and used for childcare
- Class 2: **BABYSITTER'S KIT** – A babysitter's kit (contained in a storage container, sturdy box, or drawstring bag) containing at least eight involvement items for young children. Four of the items must be handmade by the exhibitor and the remaining items may be commercial products. The kit must specify the age range the kit was designed for and each item must be labeled.
- Class 3: **INTERIOR DESIGN** – Room décor (wall hangings, organizers, etc.), concept board, floor plan, or any other interior design related

project

- Class 4: **FINANCE** – Notebook, poster, or any other item to display that depicts what you have learned about finance through 4-H
- Class 5: **OTHER** – Notebook, poster, or any other item or display that depicts your 4-H family consumer science project. Please provide a brief description of the exhibit.

DIVISION DC – Food Preparation/Cooking

Food items must not require refrigeration. A **recipe must be included**. For smaller items, four items should be provided. For larger items, only one item should be provided.

- Class 1: **FOUR BAKED COOKIES**
- Class 2: **FOUR NON-BAKED COOKIES**
- Class 3: **FOUR BAR COOKIES**
- Class 4: **FOUR MUFFINS**
- Class 5: **FOUR BROWNIES**
- Class 6: **LAYER CAKE** – Square, oblong, or round
- Class 7: **INVENTED SNACK OR TRAIL MIX**
- Class 8: **FOUR PIECES OF CANDY**
- Class 9: **BAKED FRUIT PIE** – Single or double crust
- Class 10: **INTERNATIONAL/ETHNIC FOOD PRODUCT**
- Class 11: **FOOD FOR A SPECIAL OCCASION**
- Class 12: **OUTDOOR COOKING DUTCH OVEN** – Cake, cornbread, biscuits, etc.
- Class 13: **OTHER** – Any other food item not mentioned above or in the bread division below.

DIVISION DCA – Breads

Food items must not require refrigeration. A **recipe must be included**. For smaller items, **four** items should be provided. For larger items, only **one** item should be provided.

- Class 1: **QUICK BREAD** – One loaf
- Class 2: **FOUR PRETZELS**
- Class 3: **FOUR BAKING POWDER BISCUITS**
- Class 4: **FOUR BREAD STICKS OR YEAST ROLLS** (not a sweet roll)
- Class 5: **WHITE BREAD**
- Class 6: **SPECIALTY GRAIN** (whole wheat, rye, oat, etc.)
- Class 7: **SWEET YEAST BREAD OR FOUR SWEET ROLLS**
- Class 8: **INTERNATIONAL BREAD** – One loaf
- Class 9: **CREATIVE BREAD/BREAD SCULPTURE** – One display. Use of a bread machine or purchased frozen dough are optional.

DIVISION DCB – Cake/Cupcake Decorating

Food items must not require refrigeration. For smaller items, four items should be provided. For larger items, only one item should be provided.

- Class 1: **FOUR CUPCAKES** – Design applied with colored sugar, coconut, candies, etc; all decorations must be edible
- Class 2: **FOUR CUPCAKES** – Design using at least three different types of piping tips
- Class 3: **SINGLE-LAYER** – A 8” or 9” round or square cake, a 9” X 13” oblong cake, or a cut-up cake with a design applied with colored sugar, coconut, candies, etc; all decorations must be edible.
- Class 4: **TWO OR MORE LAYERS** – Design using at least three different types of piping tips
- Class 5: **CHARACTER, 3D or DOLL** – Design using at least three different types of piping tips
- Class 6: **DECORATED CAKE USING STYROFOAM OR OTHER NON-EDIBLE FRAME**
- Class 7: **DECORATED CAKE USING FONDANT**
- Class 8: **OTHER** – Any other cake/cupcake decorating project not detailed above

DIVISION DCC – Food Preservation

SPECIAL RULES FOR HOME CANNING

Canning rules are based on safe food preservation guidelines from approved sources: National Center for Home Food Preservation (<https://nchfp.uga.edu>), USU Extension and Pacific Northwest Extension (<https://extension.usu.edu/preserve-the-harvest/canning>), USDA, and Ball Canning (<https://www.ballmasonjars.com/canning-preserving-guides.html>).

- Only products of home kitchens are eligible.
- Products entered must have been prepared (by the person entering them) since the last state/county fair. Older

products will not be accepted.

- All entries must be in clean, standard canning jars (e.g. no mayo jars) with new, single-use two-piece lids and rings.
- A one-quart or pint jar constitutes an exhibit for fruit, vegetables or meat.
- One standard-size canning jar constitutes an exhibit for preserves, conserves, pickles, and relishes based on recommendations from an approved recipe.
- One pint or 1/2-pint jar with lid constitutes an exhibit for jellies and jams.
- Exhibits should be canned using research-tested recipes, e.g. USDA, Ball, Pectin brand name, or NCHFP guidelines issued 2009 or later. Processing adjustments for altitude, time, or pressure must be made and explained on entry label.
- All fresh fruits, jams, jellies, pickles, and relishes must be processed in a boiling water bath and properly sealed. Entries processed in a steam canner will not be accepted.
- No frozen jams or wax seals will be accepted. The presence of mold disqualifies a product.
- All meats and vegetables must be processed in a pressure canner.
- The exhibitor is requested to loosen the ring on the jar so that judges can remove ring and examine the head space.
- **REQUIRED:** All jars must be labeled with name of product, method (water bath or pressure), pack (hot or raw), length of processing time, pounds of pressure (if applicable), altitude, date, city, recipe source (see above) and the year the dial gauge was last tested. This label must be attached to the bottom of jar. If sweeteners other than sugar are used, they must be included on the label. Labels are available in advance from the USU Extension Office or on their website. Example label:

- Class 1 **CANNED FRUITS** – Limit of three bottles of different fruits
- Class 2 **CANNED JAM/JELLY** – Or a

reduced sugar fruit spread (no freezer jams accepted)

- Class 3 **CANNED VEGETABLES** – Limit of three bottles of different vegetables
- Class 4 **CANNED TOMATO PRODUCT**
- Class 5 **SALSA**
- Class 6 **CANNED PICKLES OR PICKLED PRODUCT**
- Class 7 **CANNED MEATS**
- Class 8 **CANNED COMBINATION PRODUCT**
- Class 9 **DEHYDRATED FOODS**
- Class 10 **FREEZE-DRIED FOODS** – Single item
- Class 11: **FREEZE-DRIED FOODS** – Multi-ingredient items/meals

DIVISION DCD - Cooking / Non-edible

- Class 1: **TABLE SETTING AND CENTERPIECE** – For special occasion (for county fair use only)
- Class 2: **BEGINNING RECIPES** - 30 recipes legibly written or typed in file or book
- Class 3: **ADVANCED RECIPES** - 60 recipes legibly written or typed in file or book
- Class 4: **OTHER:** Notebook, poster, display, or any other item that depicts your 4-H foods, cooking or nutrition project. Please provide a brief description of the exhibit.

Product: _____
 Method: _____ Water Bath _____ Pressure
 Pack: _____ Hot _____ Raw
 Length of Processing Time: _____
 Pounds (if pressured): _____ Altitude: _____
 Year dial gauge was last tested: 20_____
 Processing Date: _____ City: _____
 Source of Recipe: _____
 Exhibitor Comments: _____

DIVISION DD – Health & Wellness

Please provide a notebook, poster, display, or any other item that depicts your health & wellness project. Please provide a brief description of the exhibit.



- Class 1: **MENTAL HEALTH**
- Class 2: **EMOTIONAL HEALTH**
- Class 3: **SOCIAL HEALTH**
- Class 4: **PHYSICAL HEALTH**
- Class 5: **HEALTHY RELATIONSHIPS**
- Class 6: **SELF CARE** – Homemade items such as face masks, scrubs, candles, etc.

DIVISION DE – Needle Arts

An item made utilizing one of the following:

- Class 1: **MACRAME** – All articles except jewelry
- Class 2: **EMBROIDERY AND APPLIQUE**
- Class 3: **COUNTED CROSS STITCH**
- Class 4: **LACEWORK**
- Class 5: **NEEDLEPOINT**
- Class 6: **LATCH HOOK**
- Class 7: **ORIGINAL NEEDLE CRAFT** – Item made from exhibitor's own design, not a kit or pattern

DIVISION DEA – Knitting

- Class 1: **KITCHEN ITEMS** – potholders, dishcloths, etc.
- Class 2: **ARTICLES** – hairbands, scrunchies, etc.
- Class 3: **BABY ITEMS** – dress, booties, etc.
- Class 4: **SWEATERS**
- Class 5: **AFGHAN**
- Class 6: **LOOM KNITTING**
- Class 7: **ADVANCED STITCHES** – Cables, fair Isle, etc.
- Class 8: **FELTED ITEMS**
- Class 9: **OTHER** – Item related to knitting not listed above

DIVISION DEB – Crochet

- Class 1: **KITCHEN ITEMS** – potholders, dishcloths, etc.
- Class 2: **SMALL ARTICLES** – hairbands, scrunchies, etc.
- Class 3: **BABY ITEMS** – dress, booties, etc.
- Class 4: **SWEATERS**
- Class 5: **AFGHAN**
- Class 6: **LOOM KNITTING**
- Class 7: **ADVANCED STITCHES** – Cables, fair Isle, etc.
- Class 8: **FELTED ITEMS**
- Class 9: **OTHER** – Item related to knitting not listed above

DIVISION DEC – Spinning And Weaving

- Class 1: **SPUN YARN** – Skeins should weigh at least 2 ounces and be properly tied in four places with self-yarn. Should include a 3"x 5" card that

describes the fiber preparation, fiber content, techniques, and appropriate use.

- Class 2: **WEAVING** – Article made by weaving
- Class 3: **OTHER** – Item related to spinning and/or weaving.

DIVISION DF – Sewing Construction

- Class 1: **PILLOWCASE**
- Class 2: **PILLOW**
- Class 3: **DRAWSTRING BAG/CAMP BAG**
- Class 4: **BAGS** – Backpack, duffle, handbag, pouch, etc. (open or with closure)
- Class 5: **BAG WITH ZIPPER**
- Class 6: **APRON**
- Class 7: **CLOTHING REMADE** – Garment must be cut or taken apart in some way during the "redesign" process (e.g., a skirt made from Levi pants, etc.). May include a before and after picture.
- Class 8: **SHORTS, CAPRIS, PANTS** – With casing, elastic, or drawstring waistband
- Class 9: **SHORTS, CAPRIS, PANTS** – With waistband or facing
- Class 10: **SKIRT** – With casing, elastic, or drawstring waistband
- Class 11: **SKIRT** – With waistband or facing
- Class 12: **VEST**
- Class 13: **PAJAMA SET, NIGHTGOWN, ROBE, OR LOUNGEWEAR** (single pajama pants should be entered in Class 7)
- Class 14: **JUMPER**
- Class 15: **SHIRT/BLOUSE**
- Class 16: **CASUAL DRESS**
- Class 17: **COAT, JACKET, OR OUTERWEAR**
- Class 18: **MULTI-PIECE OUTFIT** – Two or three pieces, not tailored (e.g. t-shirt and pants)
- Class 19: **SPECIAL OCCASION DRESS/ FORMAL OR EVENING WEAR**
- Class 20: **TAILORING** – Two- or three-piece outfit
- Class 21: **ACTION WEAR** – Using stretchable fabric (e.g. swimsuits, leotards, biking shorts, shirts, etc.)
- Class 22: **CREATE YOUR OWN FABRIC** – Clothing, home decorations, gifts, wall hangings, accessories, or whatever you choose to make with the fabric you have created
- Class 23: **SEWING FOR ANIMAL PROJECTS** – Aprons, saddlebags, tool carriers, cloth carriers, garment bags, hat tote, rope and boot bags, hay and feed bags, pads or beds, animal coats, bird cage covers, leg wraps,

tail wraps, saddle blankets, chaps, show clothes, dusters, etc.

- Class 24: **SOFT SCULPTURE** – Stuffed doll, animal, or other figure utilizing soft sculpture techniques
- Class 25: **SEWN FLEECE PROJECTS** – Any item constructed from fleece. Exhibits may include: mittens, hats, outerwear, blankets, pillows, boas, etc.
- Class 26: **SEWING FOR DOLLS** – Any article sewn for a doll
- Class 27: **HOUSEHOLD ITEMS** – Tissue cover, cord case, etc.
- Class 28: **SEWN WEARABLE ACCESSORIES** – Scrunchie, headband, infinity scarf, slouchy beanie, etc.
- Class 29: **OTHER CREATIVE SEWN TEXTILE ITEM**

DIVISION DFA – Quilting

At least 50% of the quilt will be made by the exhibitor. Please include card explaining your quilting style (did you piece it, quilt it, someone else quilt it, etc.?) Give a background story about why you chose this style. It is customary to piece the quilt and have assistance with quilting. Regardless of size of quilt, it will be judged on skills utilized. **Pillowcases should be entered in Division DF, unless they are quilted.

- Class 1: **TIED QUILTS/PIECED**
- Class 2: **TIED QUILT/WHOLE**
- Class 3: **RAG QUILTS**
- Class 4: **PIECED QUILT TOP** – Binding and/or quilting done professionally (please indicate)
- Class 5: **PIECED QUILTS, MACHINE** – Exhibitor machine quilted
- Class 6: **PIECED QUILTS, HAND** – Exhibitor hand quilted
- Class 7: **APPLIQUÉD QUILT TOP** – Binding and/or quilting done professionally (please indicate)
- Class 8: **APPLIQUÉD QUILTS, MACHINE** – Exhibitor machine quilted
- Class 9: **APPLIQUÉD QUILTS, HAND** – Exhibitor hand quilted
- Class 10: **WALL HANGINGS**
- Class 11: **MINKY FABRIC** – Quilt or blanket made using minky fabric
- Class 12: **OTHER** – Item related to quilting that is not listed above (e.g. quillow, etc.)

DIVISION DFB – Clothing/Textiles/Modeling

- Class 1: **DECORATE YOUR DUDS (EMBELLISHED GARMENT)** – Jeans, jackets, t-shirts, vests, shorts, or any clothing article decorated creatively with applique, lace,

buttons, bows, or other items. Accessories such as hats, shoes, and jewelry may be included.

- Class 2: **DECORATE YOUR DUDS** (FABRIC ALTERED GARMENT) – Fabric is tie-dyed, sun-dyed, painted, pieced, or otherwise altered while creating the garment
- Class 3: **COSPLAY** – Any costume put together by youth that is not all sewn (for multi-piece outfits see Division DF, Class 17)
- Class 4: **FABRIC CRAFT** – Doll, wreath, basket, wall hanging, or other non-clothing and/or non-sewn item mostly made from fabric
- Class 5: **DISPLAY** – Notebook, poster, display, or any other item that depicts your 4-H project in clothing and textiles that is not sewing construction. Please provide a brief description of the exhibit.
- Class 6: **OTHER** – Non-sewn creative textile items not listed above (including non-sewn fleece projects) DIVISION

E – SCIENCE, TECHNOLOGY, ENGINEERING & MATH

DIVISION EA – Biological Science

* Exhibitors may enter ONE item in each class per division of Department EA sections:

Division EAA: **BIOLOGY**

Division EAB: **VETERINARY SCIENCE**

Division EAC: **FOOD SCIENCE**

Division EAD: **POULTRY SCIENCE / EMBRYOLOGY**

Division EAF: **BOTANY** – Propagation and other botany topics that are not included in gardening (see Department G)

Division EAG: **ENTOMOLOGY**

- Class 1: **PROJECT** related to this subject
- Class 2: **PORTFOLIO** summarizing experiences with this subject
- Class 3: **POSTER** explaining the project in this subject
- Class 4: **EXPERIMENT** – Poster, notebook, or other display showing an experiment related to this subject
- Class 5: **OTHER** – Display or project related to this subject

DIVISION EB – Engineering

* Exhibitors may enter ONE item in each class per division of Department EB sections:

Division EBA: **MECHANICAL ENGINEERING**

Division EBB: **CIVIL ENGINEERING**

Division EBC: **ARCHITECTURAL ENGINEERING**

Division EBD: **ELECTRONIC ENGINEERING**

Division EBF: **AEROSPACE ENGINEERING**

Division EBG: **AUTOMOTIVE**

Division EBH: **ELECTRONICS**

Division EBJ: **GAME DESIGN** – Analog games, such as board games (digital games should be entered under computer science)

- Class 1: **PROJECT** related to this subject
- Class 2: **PORTFOLIO** summarizing experiences with this subject
- Class 3: **POSTER** explaining the project in this subject
- Class 4: **DESIGN** – Poster, notebook, or other display showing how the engineering design was used in a project
- Class 5: **OTHER** – Display or project related to the subject

DIVISION EC – Computer Science

* Exhibitors may enter ONE item in each class per division of Department EC sections:

Division ECA: **COMPUTER SCIENCE AND COMPUTATIONAL THINKING**

Division ECB: **APP CREATION**

Division ECC: **WEBSITE DEVELOPMENT** (Block based, text based, HTML)

Division ECD: **LASER CUT/ENGRAVED DESIGNS**

Division ECE: **3D PRINTING** – Own design

Division ECF: **3D PRINTING** – Downloaded file

Division ECG: **PIXELATION** – Own design

Division ECH: **PIXELATION** – Kit

Division ECI: **ROBOTICS**

- Class 1: **PROJECT** related to this subject
- Class 2: **PORTFOLIO** summarizing experiences with this subject
- Class 3: **POSTER** explaining the project in this subject
- Class 4: **COMPUTATIONAL THINKING/ CODE DESIGN** – Poster, notebook, or other display showing how the engineering design model was used in a coding project)
- Class 5: **OTHER** – Display or project related to the subject

DIVISION ED – General Science:

* Exhibitors may enter ONE item in each class per division of Department ED sections:

Division ECA: **CHEMISTRY**

Division ECB: **PHYSICS**

Division ECC: **EARTH SCIENCE**

Division ECD: **ARCHAEOLOGY**

Division ECE: **ANTHROPOLOGY**

Division ECF: **ASTRONOMY**

Division ECG: **MATH**

Division EDH: **OTHER**

Division ECI: **SOCIAL SCIENCE** – History

Division EDJ: **SOCIAL SCIENCE** – Genealogy

Division EDK: **SOCIAL SCIENCE** – General

Division EDL: **OTHER**

- Class 1: **PROJECT** related to this subject
- Class 2: **PORTFOLIO** summarizing experiences with this subject
- Class 3: **POSTER** explaining the project in this subject
- Class 4: **EXPERIMENT** – Poster, notebook, or other display showing an experiment relating to the subject)
- Class 5: **OTHER** – Display or project related to the subject

SEE DEPARTMENT AA FOR AGRISCIENCE

DIVISION F – GENERAL 4-H

DIVISION FA – General 4-H

- Class 1: **ACCESS, EQUITY, & INCLUSION** – Notebook, poster, display, or any other item that promotes equity, access, and inclusion in 4-H
- Class 2: **MARKETING & PROMOTION** – Notebook, poster, display, or any other item that promotes or markets 4-H
- Class 3: **OTHER** – Notebook, poster, display, or any other item that depicts the exhibitor's 4-H project that doesn't fall within any other Class mentioned above

DIVISION FB – Cloverbud

- Class 1: **CLOVERBUD** – ANY exhibit for a Cloverbud-aged exhibitor (K-2)

DIVISION G – PLANTS

DIVISION GA – FLOWER GARDENING/ HOUSE PLANTS

The number of flowers required for each exhibit follows each flower type.

- Class 1: **ANNUALS** – 3 or more stems each from any type or variety of annual
- Class 2: **PERENNIALS** – 3 stems of any type or variety of perennial
- Class 3: **GLADIOLI** – Single stem, named variety
- Class 4: **BORDER AND ROCK PLANTS** – 3 clusters
- Class 5: **DAHLIAS AND ZINNIAS** – Single specimen, named variety
- Class 6: **EVERLASTINGS AND OTHERS FOR DRYING** – Single specimen, named variety
- Class 7: **MARIGOLDS** – 3 blossoms, named variety
- Class 8: **PANSIES** – 3 blossoms, named variety

JUNIOR LIVESTOCK

See Livestock Premium Book at weberjrlivestock.org

BREEDING HEIFER SHOW

See Livestock Premium Book at weberjrlivestock.org

BUCKET CALF

See Livestock Premium Book at weberjrlivestock.org

- Class 9: **PETUNIAS** – 3 blossoms, named variety
- Class 10: **FLOWERING VINES** – 3 specimens, named variety
- Class 11: **ROSES** – All foliage and thorns removed from stems to the first bud, cluster, or flower, except for shrub and species (3 blossoms, named variety)
- Class 12: **LILIES** – All foliage removed from stem (1 stem, named variety)
- Class 13: **SUNFLOWERS** – Single specimen, named variety
- Class 14: **MISCELLANEOUS** – 3 blossoms, named variety
- Class 15: **GENERAL GARDEN DISPLAY** – Largest number of different flower species, best collection of 6 different flower species, best bloom in your garden, etc.
- Class 16: **ARRANGEMENTS** – Dried, fresh, or artificial floral arrangements
- Class 17: **HOUSE PLANTS** – Plants that require a low amount of light and water to thrive (e.g. aloe vera, spider plant, ferns, bird of paradise, rubber plant, peace lily, etc.)
- Class 18: **OTHER**

DIVISION GB – FRUIT/VEGETABLE GARDENING

Any garden fruit or vegetable grown by the exhibitor. The exhibit is to meet stated requirements explained in the Utah 4-H Vegetable Garden Manual. All exhibits entered are to be identified by the variety used. Produce should be fresh, washed (unless otherwise stated), trimmed, and/or have the tops removed. Each exhibitor is allowed to enter up to two exhibits in each class, but they must be different varieties. Single exhibits should contain the following number for display:

- Class 1: **APPLES** – 3 fruits
- Class 2: **APRICOTS** – 3 fruits
- Class 3: **BEANS, LIMA** – 5 pods (fresh)
- Class 4: **BEANS, SNAP** – 5 pods (fresh)
- Class 5: **BEETS** – 3 roots (fresh, washed, tops off)

- Class 6: **BRAMBLE FRUIT** – 10 fruits (raspberries, blackberries, etc.)
- Class 7: **CARROTS** – 3 roots (fresh, washed, tops off)
- Class 8: **CABBAGE** – 1 head (trimmed)
- Class 9: **CAULIFLOWER** – 1 head (trimmed)
- Class 10: **CANTALOUPE** [Muskmelon] – 1 fruit (firm, ripe)
- Class 11: **CELERY** – 1 plant or stalk (trimmed, washed)
- Class 12: **CORN, SWEET** – 3 ears (husked, table maturity)
- Class 13: **SLICING CUCUMBERS** – 3 fruits
- Class 14: **EGGPLANTS** – 1 fruit
- Class 15: **GARLIC** – 3 bulbs
- Class 16: **GRAPES** – 1 cluster
- Class 17: **HERBS** – 3 sprigs
- Class 18: **LETTUCE** – 1 head (trimmed)
- Class 19: **NUTS** – 10 nuts (peanuts, walnuts, hazelnuts, pistachios, etc.)
- Class 20: **ONIONS** – 3 bulbs (washed and trimmed)
- Class 21: **ORNAMENTAL GOURDS** – 1 of a large variety or 3 of a small variety
- Class 22: **OTHER SMALL FRUIT** – 10 fruits (strawberries, gooseberries, currants, etc.)
- Class 23: **PARSNIPS** – 3 roots (fresh, washed, tops off)
- Class 24: **PEAS** – 5 pods
- Class 25: **PEACHES** – 3 fruits
- Class 26: **PEARS** – 3 fruits
- Class 27: **PEPPERS** (Hot Varieties) – 3 fruits
- Class 28: **PEPPERS** (Sweet Varieties) – 3 fruits
- Class 29: **PLUMS** – 3 fruits
- Class 30: **POTATOES** – 3 tubers
- Class 31: **PUMPKIN** – 1 fruit (medium size)
- Class 32: **SQUASH** (Summer) – 3 fruits (table maturity)
- Class 33: **SQUASH** (Winter) – 3 fruits (small varieties, mature)
- Class 34: **SQUASH** (Winter) – 1 fruit (large varieties, mature)
- Class 35: **SWISS CHARD** – 1 large plant (roots attached and washed)

- Class 36: **TOMATOES** – 3 fruits (mature, green: tops on OR red: tops off)
- Class 37: **TOMATOES** (Cherry Varieties) – 5 fruits (mature, tops off)
- Class 38: **TOMATOES** (Paste Varieties) – 3 fruits (red, tops off)
- Class 39: **TURNIPS** – 3 roots (fresh, washed, tops off)
- Class 40: **WATERMELON** – 1 fruit (firm, ripe)
- Class 41: **OTHER** – Fruit or vegetable properly named and prepared (the number entered should be the same as a similar fruit/vegetable listed above)
- Class 42: **GARDEN CORNUCOPIA** – 6 kinds of garden fruits and/or vegetables of the number listed above and arranged for group display. Each part of the entry must have the proper variety identified.
- Class 43: **ORGANIZATION PLAN FOR GARDEN PROJECT** – This project is especially for members in areas where the harvest may be over or where fruits/vegetables may not yet have matured. Using any form (e.g. USB, poster, or notebook), the exhibitor is to present their plan for planting a garden and harvesting the produce. The following items should be included in the presentation:
- List/diagram
 - Garden size and directional exposure
 - Location
 - Date
 - Amount and variety(ies) of seed to be planted
 - Anticipated costs for water, fertilizer, seeds and plants
 - Anticipated use of the harvest
- Class 44: **VEGETABLE ART** - Create anything you'd like using a variety of fruits and vegetables. Seeds, nuts, and edible flowers are also okay. Please include the title. At least half of the creation must be from produce grown by the 4-Her.

FIESTA FUN 4-H HORSE SHOW

WEDNESDAY, AUGUST 7, 8 a.m.
RIDING ARENA

Superintendent:

Kari Byington, (801) 750-0999,
karibyington@aol.com

ENTRY INFORMATION

1. Entry deadline will be August 2. No late entries will be accepted.
2. Open to Weber County 4-H horse program participants only. Current year project horses only. Substitutes for special exceptions must be cleared through the Weber County 4-H Horse Council Presidency. Two-handed projects will take a ribbon drop penalty for judged events.
3. Mail entries to;
Fiesta 4-H Horse Show
1000 North 1200 West
Ogden, Utah 84404, or enter at the Golden Spike Arena Box Office.
4. All classes will abide by the Utah State 4-H horsemanship contest rule book. This is a stand-alone show and does not count toward any other 4-H activities.
5. Danish and American system will apply for point scoring.
6. Age groups: (grade as of January 1, 2024)
 - 3rd-5th grade: Junior
 - 6th-8th grade: Intermediate
 - 9th-12th grade: Senior
 - Novice, Junior, Intermediate, or Seniors who have been showing in this class at the shows. Beginner riders.

ENTRY FEES

1. \$20/person and one horse per person (by August 2). No late entries will be accepted.
2. Contestants should enter through BDO to the south gate of the fairgrounds. Gates will open at 6:30 a.m. Please park in the field directly west of the Riding Arena.
3. Check-in in the foyer of the Riding Arena from 7-8 am. Parking for contestant vehicles and horse trailer is available only in the gravel parking lot west of the Riding Arena. All contestant vehicles should be parked in the west parking lot. No one is allowed in the barn parking lot without a barn pass.
4. Exhibitors will receive two complimentary day passes and are eligible to purchase a max of two day passes.

CLASSES

1. Senior Showmanship
 2. Intermediate Showmanship
 3. Junior Showmanship
 4. Novice Showmanship
 5. Senior Western Rail Bareback (walk, jog, lope both ways of arena, back up in line)
 6. Intermediate Western Rail Bareback (walk, jog, lope both ways of arena, back up in line)
 7. Junior Western Rail Bareback (walk, jog, lope both ways of arena, back up in line)
 8. Novice Western Rail Bareback (walk, jog, lope both ways of arena, back up in line)
 9. Leadline (free, ages 1 - 7, prizes for all)
 10. Senior Western Rail Class (walk, jog, lope along rail both ways and back up in line)
 11. Intermediate Western Rail Class (walk, jog, lope along rail both ways and back up in line)
 12. Junior Western Rail Class (walk, jog, lope along rail both ways and back up in line)
 13. Novice Western Rail Class (walk, jog, lope along rail both ways and back up in line)
 14. Pairs Pleasure (walk, jog, lope together both ways of arena, line up and back up in line)
****Extra points given for matching outfits. Only ribbons and premiums given out for top 6 in this class, but no points toward all-around.*
- 30 MINUTE LUNCH BREAK TO RAKE ARENA**
15. Senior Poles
 16. Intermediate Poles
 17. Junior Poles
 18. Novice Poles
 19. Senior Gymkhana
 20. Intermediate Gymkhana



21. Junior Gymkhana
22. Novice Gymkhana
ARENA TAKE DOWN, RAKE, SET BARRELS
23. Stick Horse Barrels (ages 3 - 7, prizes for all running smaller pattern)
24. Senior Barrel Racing
25. Intermediate Barrel Racing
26. Junior Barrel Racing
Novice Barrel Racing
BREAK, ARENA RAKE, RE-SET FOR BARRELS
27. Novice Barrels
28. Junior Barrels
29. Intermediate Barrels
30. Senior Barrels

AWARDS

1. Rosettes for 1st-6th place in each class, plus premiums.
2. Belt Buckles for Top Hand (each age group with highest total points)
3. Awards for Top Speed and Judged.
****Other awards given in 4-H building after show.*

SCHEDULE FOR PAYBACK

1 st	\$6	4 th	\$3
2 nd	\$5	5 th	\$2
3 rd	\$4	6 th	\$1

JR. POSSE HORSE SHOW

THURSDAY, AUGUST 8, 4 p.m.
RIDING ARENA

Superintendents:

Tanya Anderson, (801) 564-5126
crazykruitbosch@gmail.com

ENTRY INFORMATION

1. Entry deadline is August 2. No late entries will be accepted.
2. Mail entries to Weber County Fair, Attn. Jr. Posse, 1000 North 1200 West, Ogden, UT 84404 or enter at the Golden Spike Event Center Box Office.
3. This show is open to all registered Jr. Posse members ages 7 – 18 as of September 1, 2023.
4. Exhibitors will receive two complimentary day passes and are eligible to purchase a max of two day passes.
5. Please make sure that you list who your teammates will be on the entry form. If you do not list anyone, you will be placed on a team that is not complete.

- Please park in the field directly west of the Riding Arena.

ENTRY FEES

- \$20 per competitor. This will enter you once in each individual event and once in each team event. You may only sign up once.
- No late entries will be accepted. (Note: Class names are for voucher only. Competitor does not need to list which event they are running in as they will compete in all events).

JR. POSSE INDIVIDUAL JACKPOT

- JP 1 Novice Barrels
- JP 2 Intermediate Barrels
- JP 3 Advanced Barrels
- JP 4 Novice Keyhole
- JP 5 Intermediate Keyhole
- JP 6 Advanced Keyhole

JR. POSSE TEAM JACKPOT EVENTS

(Will not be done as a 3-D)

This will be a three man team event. Members must use the same horse that they competed on all year. All team members must be at the same riding level, i.e., Novice, Intermediate, Advanced. Lower level riders may ride up a level, but higher levels cannot ride down.

- JP 7 Team Novice keyhole
- JP 8 Team Intermediate keyhole
- JP 9 Team Advanced Keyhole
- JP 10 Team Novice Poles
- JP 11 Team Intermediate Poles
- JP 12 Team Advanced Poles
- JP 13 Team Novice Barrels
- JP 14 Team Intermediate Barrels
- JP 15 Team Advanced Barrels

There will be \$700 added money. All money will be paid out.

OPEN ALL-BREED HORSE SHOW

SATURDAY, AUGUST 10, 8 a.m.
RIDING ARENA

Superintendent:
Jodi Petersen, (801) 645-2743
jodipetersen2743@gmail.com

ENTRY FEES

Open - \$12/class | Youth - \$10/class

ENTRY INFORMATION

- Entry deadline is August 2. NO entries will be taken day of show.
- Entries are NOT limited to Weber County Residents.
- Mail entries to: Weber County Fair, All Breed Horse Show, 1000 North 1200 West, Ogden, UT 84404.
- Exhibitors will receive two complimentary day passes and are eligible to purchase a max of two day passes.
- Premium vouchers will be given at the end of each class. There must be 3 entries in a class to pay premiums. If there are not 3 entries in a class, classes may be combined at show management discretion. Premiums can be paid in combined classes. If classes have too many entries, classes may be divided at show management discretion. All vouchers must be cashed no later than August 31 at the Premium Bank inside the Golden Spike Arena. Vouchers will not be mailed to contestants winning premiums.
- Ribbons to all classes, first through sixth place. Non-Entry fee classes will not receive premiums, but will receive awards.

CLASSES: HALTER

- AB - 1 2024 Fillies
- AB - 2 2023 Fillies
- AB - 3 2022 Fillies
- AB - 4 2021 Fillies
- AB - 5 4 and older Mares

Grand & Reserve Mares

- AB - 6 2024 Geldings
- AB - 7 2023 Geldings
- AB - 8 2022 Geldings
- AB - 9 2021 Geldings
- AB - 10. 4 and older Geldings

Grand & Reserve Geldings

- AB - 11 2024 Colts
- AB - 12 2023 Colts
- AB - 13 2022 Colts
- AB - 14 2021 Colts
- AB - 15. 4 and older Stallions

Grand & Reserve Stallions

- AB - 16 Youth Showmanship (11 & under) Age day of show
- AB - 17 Youth Showmanship (12-14 yrs. old)
- AB - 18 Youth Showmanship (15-18 yrs. old)
- AB - 19 Adult Showmanship

AB - 20 Lead line (walk only, no entry fee, riders 5 and under must wear western attire and adult must lead the horse with lead shank attached to bridle)

AB - 21 Walk Trot (no entry fee, riders 8 and under, rider must not have shown in previous class)

AB - 22 Costume Class "Anything Goes" (no entry fee)

We will take a short break so participants can get ready for the Pleasure classes. (15 minutes)

AB - 23 Youth Western Pleasure (13 years & under)

AB - 24 Youth Western Pleasure (14-18 years)

AB - 25 Junior Western Pleasure (Horse 2-4 years old)

AB - 26 Senior Western Pleasure (Horse 5 years and older)

We will prepare the arena for Reining. (10 Minutes)

AB - 27 Youth Reining (13 years & under)

AB - 28 Youth Reining (14-18 years)

AB - 29 Junior Reining (Horse 2-4 years old)

AB - 30 Senior Reining (Horse 5 years and older)

Patterns to be determined by the judge posted the day of the show.

SCHEDULE FOR PAYBACK

# IN CLASS	1 ST	2 ND	3 RD	4 TH	5 TH	6 TH
3-6	\$10	\$8	\$5			
7-10	\$13	\$10	\$8	\$5		
11-15	\$15	\$13	\$10	\$8	\$5	
16 & OVER	\$18	\$15	\$13	\$10	\$8	\$5



**HORSE
PULLS**

**FRIDAY
AUGUST 9**

**6 PM
RIDING ARENA**

Superintendent:
Julie Martin, (801) 244-9469 • julie.palmer.martin@gmail.com

See rules and entry information at
utahhorsepullers.weebly.com or Utah Horse Pullers Association on Facebook



POULTRY

Superintendent:
Julie Funk, (801) 814-4920
sarrazan@gmail.com

ENTRY FEES & DEADLINES

1. Entry fee is \$5 per bird.
2. Entry deadline is July 31.
3. No late entries will be accepted. Mail entries to: Weber County Fair
Attn: Poultry Department
1000 North 1200 West
Ogden, Utah 84404, or enter at the Golden Spike Arena box office.
4. Exhibitors will be given two complimentary day passes. Exhibitors will be eligible to purchase a participant day or week pass. Passes are available the day of entry ONLY. One per exhibitor.
5. No waterfowl or pigeons
6. Peewee division, 6 & under
7. Junior division, 7-18 years old.
8. Open division, 19+

PLACING & RELEASE OF EXHIBITS

1. Poultry will be accepted Tuesday, August 6, from 5 p.m.- 8 p.m. Poultry will not be accepted before or after this time.
2. Birds must be removed Saturday, August 10, AFTER 11 pm, NOT BEFORE.
3. You must meet entry and release requirements.

HEALTH REGULATIONS

1. Sick birds will not be admitted. The superintendent or assistant will be the judge as to what constitutes a sick bird. Healthy birds are not to be removed from exhibit room without permission from superintendent.
2. An exhibitor will not enter birds exposed to or affected with any contagious or infectious disease. Refer to Health Regulations governing exhibits of livestock. These rules will be enforced by the Utah State Board of Agriculture.
3. The show management will return to the owner any bird showing symptoms of contagious or infectious disease.
4. All birds on exhibit will be inspected daily by a competent and qualified person.

CLASSIFICATIONS

All standard varieties listed in the American Standard of Perfection and Bantam varieties

listed in the ABA Bantam standard may be entered. We reserve the right to combine varieties for competition, if not enough are entered under each class.

MISCELLANEOUS

1. The show management will not be responsible for any damage, accident, death in transit, or during the show. However, every precaution will be taken to ensure against such hazards.
2. All single birds will be cooped separately, if space permits.
3. No exhibitor or member of his immediate family will be allowed to enter more than ten varieties in the aggregate.
4. All eggs laid during the exhibition will be collected by the superintendent. Their vitality will be destroyed and they shall become the property of the fair.
5. In order to participate, exhibitor MUST be a Weber County resident.
6. Cages can ONLY be opened by fair personnel.
7. Birds will be fed and watered by staff.

JUDGING

1. Judging will take place Wednesday, August 7 at 9 am.
2. The judge will not be interrupted while judging. Exhibitors will not be allowed in the building while judging is taking place.

PREMIUMS

The Weber County Fair offers the following awards as well as ribbons in each class.

Blue Ribbons	\$6
Red Ribbons	\$4
White Ribbons	\$2

AWARDS

Best Junior (18 years of age and younger) -Trophy and \$25 premium.

Reserve Junior (18 years of age and younger) Trophy

LARGE FOWL

- 1 Best Large Fowl – Trophy and \$25
- 1 Reserve Champion – Trophy

BANTAMS

- 1 Best Bantam – Trophy and \$25
- 1 Reserve Champion - Trophy

RABBITS

Superintendent:
Mandy Starr, (541) 852-2017
mandarastarr@gmail.com

NOTE: This year we will be having both an open and a 4-H show. You may not show in 4-H unless you are enrolled in 4-H by June 1, 2024.

ENTRY FEE & DEADLINES

1. Entry fee is \$5 per rabbit
2. Entry deadline August 2.
3. You may only enter each rabbit in one show—open or 4-H—not both.
4. Mail entries to:
Rabbits
1000 North 1200 West
Ogden, Utah 84404, or enter in person at the Golden Spike Arena Box Office.
5. Exhibitors will be given two complimentary day passes. Exhibitors will be eligible to purchase a participant day or week pass. Passes are available the day of entry ONLY. One per exhibitor

PLACING & RELEASE OF EXHIBITS

1. Rabbits will be accepted Tuesday, August 6, from 5 p.m. – 8 p.m. Rabbits will NOT be accepted before or after this time.
2. Rabbits will be released Saturday, August 10, AFTER 11 pm, NOT BEFORE. Weber County will not be responsible for rabbits not picked up after this time.
3. You must meet entry and release requirements.

REGULATIONS

1. All entries must have ear marks inside left ear. Please contact the superintendent prior to entry for more information, if needed.
2. **NO PREGNANT RABBITS!** No rabbits under 12 weeks old or under 1 pound in weight.
3. No rabbits if they will kindle or are nursing during the fair.
4. Rabbits will be fed and watered by the superintendent. Any special feedings must be done by exhibitor.
5. This show will be governed by the latest revised rules of the American Rabbit Breeders Association, and the filing of the entry forms indicates your acceptance of these rules.
6. Showroom classes – see ARBA Standard of perfection.
7. Exhibitors may NOT communicate with

judge during or prior to judging. This will result in disqualification.

8. Any rabbit showing signs of illness will be removed from showroom and the exhibitor will be contacted.
9. There is no doe and litter class.
10. The hemorrhagic vaccine is not mandatory, but strongly recommended for all rabbits who wish to participate.
11. In order to participate, exhibitor MUST be a Weber County resident.

PLEASE DO NOT ENTER SICK RABBITS!

JUDGING

1. Judging day will be Wednesday, August 7, starting at 10 a.m.
2. Open show judging will be first, followed by 4-H judging, and then 4-H Showmanship.

PREMIUMS

Blue Ribbons	\$3
Red Ribbons	\$2
White Ribbons	\$1

Ribbons will be awarded to the first four places in each class by the Weber County Fair which also offers the following:

A Rosette for Best of Breed for Best in Show (with 5 or more rabbits exhibited only)

A Rosette for each of the Best Opposite Sex of the Breed (with 5 or more rabbits exhibited only)

An award and \$20 for Best in Show

An award and \$15 for 1st runner up to Best of Show

An award and \$10 for 2nd runner up to Best in Show

An award and \$15 for Best Pet/Mixed Breed.

All awards listed will be given for both open and 4-H shows. No Best Pet/Mixed Breed award for 4-H.

OPEN SPECIAL RULES

If the number of entries exceeds the number of cages available, there will be a carry cage show. Those who have multiple entries and are willing to participate in the carry cage show, please note the following:

1. Indicate the rabbit(s) you want in the carry cage show by putting a star next to the entry. An entire entry cannot be a carry cage only.
2. You will be notified prior to check-in day if there will be a carry cage show and which rabbits, you indicated, will be in it.
3. If any of the rabbits entered in the carry cage show win a Best of Breed or Best

Opposite Sex of Breed, they will have to remain for the entire fair.

4-H SPECIAL RULES

1. Must be an enrolled member of 4-H on or before June 1, 2024.
2. Exhibitor must be present during judging.
3. There will be a confirmation class, as well as a showmanship class.
4. 4-H attire is required (white button-down shirt, jeans, and a 4-H patch).

ARBA RABBIT SHOW

Saturday, August 10th (time TBD)

1. Rabbits will be brought and leave the same day.
2. Exhibitors must be present for all judging and are responsible for the care of your rabbit(s) (not the Weber County Fair).
3. Weber County resident exhibitors are able to show in both the Weber County Fair AND the ARBA show (must be present for duration of ARBA show).
4. Entry into the fair is not covered.
****Please contact the superintendent if you're interested in volunteering to help! Will receive entrance and parking pass.*

SCHOOL SUPPLY DRIVE

AUGUST 8

- Pencils
- Composition Notebooks
- Spiral Wide-Ruled Notebooks
- Graph Paper
- Colored Pocket Folders
- Glue Sticks
- Colored Pencils
- 16 Count Crayons
- Washable Markers, Thin or Wide
- Sticky Notes

There will be bins at every gate to drop off your donations

OPEN & JR. DAIRY

Friday, August 9, 5:30 p.m.
 Superintendent: Trent Wade (801) 690-2090, wadetrent@yahoo.com

ENTRY INFORMATION

1. Entry fee \$10/head, plus \$10/exhibitor who wishes to participate in showmanship. There is not an entry for group classes. Deadline for entries is August 3. No late entries will be accepted.
2. Entries can be sent to:
 Dairy Show 1000 North 1200 West Ogden, UT 84404 OR enter at the Golden Spike Event Center Box Office.
3. Junior exhibitors, as of January 1st of current year, the exhibitor must be in 3rd – 12th grade, be at least 8 years old, and have not passed his/her 19th birthday.
4. Exhibitors will be given two complimentary day passes. Exhibitors will be eligible to purchase a participant day or week pass. One Barn A parking pass will be given to each exhibitor (not valid Saturday of the fair). No exceptions.
5. Entries are NOT limited to Weber County residents.

ENTRY & RELEASE DATE OF ANIMALS

1. Cattle will be accepted Tuesday, August 6, 4 pm – 8 pm and Wednesday, August 7, 8 am – 11 am.
2. Cattle will be released Saturday, August 10 AFTER 11 pm.

DIVISIONS

Division 1: Holsteins
 Division 2: Jerseys

GENERAL RULES

Jr. and Open Division will be judged together. The junior exhibitors will be recognized.

CLASSES WILL ONLY BE JUDGED ONCE. ONE PREMIUM PER ANIMAL WILL BE PAID

Each animal can only be entered once: Jr. or Sr.

Milking cows can be brought to the facility the morning of the show with superintendent approval.

It is recommended that exhibitors wear proper show ring attire (boots, white pants, button-up collared shirt, and 4-H patch or FFA jacket).

OPEN SHOW REGULATIONS

1. There is no limit to the number of animals exhibited per family farm unit.
2. No more than two premiums per family farm unit will be paid in a class, except classes 8, 15, and 16 where only one premium will be paid.
3. Purebred or identified animals may be shown as a project.
4. Junior exhibitors may show all animals registered in his/her name in the Junior Division. Verification of ownership will be required.

JUNIOR SHOW REGULATIONS

1. Junior exhibitors must currently be enrolled in 4-H of FFA.
2. Purebred or identified animals may be shown.

CLASS LISTINGS

1. Pre 4-H parade. Anyone who wants to participate who has not aged into the 4-H program (special prizes will be given to participants).
2. Jr. Fitting & Showmanship, 3rd – 5th grades
3. Intermediate Fitting & Showmanship, 6th – 8th grades
4. Senior Fitting & Showmanship, 9th – 12th grades

HEIFER CLASSES

1. Spring heifer calf, born March 1, 2024 – May 31, 2024.
2. Winter heifer calf, born December 1, 2023 – February 28, 2024.
3. Fall heifer call, born September 1, 2023 – November 30, 2023.
4. Summer yearling, born June 1, 2023 – August 31, 2023.
5. Spring yearling, born March 1, 2023 – May 31, 2023.
6. Winter yearling, born December 1, 2022 – February 28, 2023.
7. Fall yearling, born September 1, 2022 – November 30, 2022.

Junior Champion – Reserve Junior Champion – Junior Show
 Junior Champion – Reserve Junior Champion – Open Show

HEIFER GROUP CLASS

1. Junior best three females. Must have at least one animal bred by exhibitor. One entry per farm.

COW CLASSES

1. Two-year old, born September 1, 2021 – August 31, 2022.
2. Three-year old, born September 1, 2020 – August 31, 2021.
3. Four-year old, born after September 1, 2019 – August 31, 2020.
4. Five-year old and older, born before September 1, 2018.
5. Dry cow. Any age. Must be freshened at least once.

Senior Champion – Reserve Senior Champion – Junior Show
 Grand Champion – Reserve Grand Champion – Junior Show
 Senior Champion – Reserve Senior Champion – Open Show
 Grand Champion – Reserve Grand Champion – Open Show

COW GROUP CLASSES

1. Senior Best Three Females – must have at least one animal bred by exhibitor. One entry per farm.
2. Breeders Herd – All five must be owned by the same farm. Must consist of two females from classes 4 – 10, two females from classes 12 – 17, and one from any class. At least three must be bred by the exhibitor. One entry per farm.
3. 4-H/FFA Club Class – Five animals, no more than two owned by the same person – 2 freshened, 2 heifers, and 1 of either. Cannot have shown in open show group classes. All vouchers will be paid to exhibitor.

	1 ST	2 ND	3 RD	4 TH	5 TH	6 TH
Classes 2-11	50	45	35	30	25	20
Classes 12-18	65	55	50	45	40	35
Class 19	250	200	150	100	75	50
Class 20	100	75	50	25	-	-



PEEWEE GOAT SHOW

Wednesday, August 7, 7 pm

Superintendents: Chase Fuller

(801) 391-9806, chase.v.fuller@gmail.com

Jill Fuller: (801) 698-7262

ENTRY INFORMATION

1. Entry deadline is July 31.
2. Entry fee \$5/animal. No late entries will be accepted. Please send all entries to: Weber County Fair 1000 North 1200 West Ogden, UT 84404 OR enter at the Golden Spike Event Center Box Office. Online entries will not be accepted.
3. ALL does must have Scrapies identification or premises identification listed on entry form.
4. Exhibitors will be given two complimentary day passes. Exhibitors will be eligible to purchase a participant day or week pass. Passes are available the day of entry ONLY. One per exhibitor
5. Only one animal per exhibitor per class.

ENTRY & RELEASE TIMES OF ANIMALS

1. Animals will be accepted Tuesday, August 6 from 6:30 pm – 7:30 pm.
2. Exhibitors need to feed, water, and maintain animal for duration of their stay.
3. Animals will be released Wednesday, August 7 after the show is finished. **EXHIBITORS WILL NOT HAVE VEHICLE ACCESS TO BARN ROAD. PLEASE PLAN ACCORDINGLY.** Superintendent reserves the right to release animals earlier or later for special cause.

REGULATIONS

1. Show is open to all Weber County residents, ages 3 – 8 years old.
2. Absolutely no sick animals allowed. Superintendents reserve the right to release any animal showing illness or disease.
3. All goats will be inspected upon check-in to confirm Scrapies information. All reproductive animals must be tagged or tattooed before they will be accepted.
4. Prior to the show, animals should be clean and trimmed.
5. Any breed or age of goat accepted.
6. This is a peewee class for a fun experience and lots of photo opportunities!
7. Not affiliated with the Jr. Livestock program or auction. NOT eligible for boosts.

AWARDS & PREMIUMS

All entries will receive a ribbon/prize.

Showmanship:

1. Peewee Show (children 3 – 8 years old)

Classes will be determined by quantity of entries in each age group.



DAIRY ENTRY FORM

DEADLINE AUGUST 2, 2024

Exhibitor's Name _____ Email _____

Farm _____

Open/Junior Show _____ Phone _____

Street Address _____

City _____ State _____ Zip _____

Additional Junior Information, 4-H/FFA School grade as of January 1 of current year: _____

Please accept the entries indicated below, subject to the rules and classifications governing exhibits at the Weber County Fair as published in the Premium Book, by which I hereby agree to be governed in exhibiting the same and I further declare that all statements made in connection with said entered are true. I hereby release the Weber County Fair from all liability of every kind and character on account of loss, damages, or injury to property which I have on the fairgrounds.

HOLSTEIN

CLASS #	ANIMAL'S NAME	BIRTHDATE	REG. #	SIRE	DAM

JERSEY

CLASS #	ANIMAL'S NAME	BIRTHDATE	REG. #	SIRE	DAM

All participants mailing in entries will be emailed their tickets. Please include a current email address.

LIMIT: Thirteen animals per farm. One animal that is not owned by Junior exhibitor may be shown as his or her project animal in the Junior judging. Read carefully the rules for entry.

MAKE CHECKS PAYABLE TO WEBER COUNTY FAIR.

MAIL TO:
 Dairy Show
 1000 North 1200 West
 Ogden, UT 84404

PEEWEE GOAT ENTRY FORM

DEADLINE JULY 31, 2024

Date of Entry _____

Exhibitor's Name _____

Parent/Guardian's Name _____

Street Address _____

City _____ State _____ Zip _____

Phone _____ Email _____

Please accept the entries indicated below, subject to the rules and classifications governing exhibits at the Weber County Fair as published in the Premium Book, by which I hereby agree to be governed in exhibiting the same and I further declare that all statements made in connection with said entered are true. I hereby release the Weber County Fair from all liability of every kind and character on account of loss, damages, or injury to property which I have on the fairgrounds.

Exhibitor's signature _____

Parent/Guardian's signature _____

NOTE: Each exhibitor will receive two complimentary day ticket with entry

Number of entries = _____ x \$5 per animal = _____

Additional passes, **\$4** (one per exhibitor) _____

Total amount enclosed _____

MAIL TO:
Peewee Goat Show
1000 North 1200 West
Ogden, UT 84404

**All participants mailing in entries will be emailed their tickets.
Please include a current email address.**
MAKE CHECKS PAYABLE TO WEBER COUNTY FAIR.

FIESTA 4-H HORSE SHOW ENTRY FORM

DEADLINE AUGUST 2, 2024

Date of Entry _____

Exhibitor's Name _____ Email _____

Parent/Guardian's Name _____

Street Address _____

City _____ State _____ Zip _____

Phone _____ Last Grade Completed in School _____

Name of 4-H Club or Leader _____

Please accept the entries indicated below, subject to the rules and classifications governing exhibits at the Weber County Fair as published in the Premium Book, by which I hereby agree to be governed in exhibiting the same and I further declare that all statements made in connection with said entered are true. I hereby release the Weber County Fair from all liability of every kind and character on account of loss, damages, or injury to property which I have on the fairgrounds.

MUST BE ENROLLED IN A WEBER COUNTY 4-H HORSE PROGRAM

Exhibitor's signature _____

Parent/Guardian's signature _____

NOTE: Each exhibitor will receive two complimentary day ticket with entry

All-day entry fee **\$20** _____

Additional day tickets needed (max 2 tickets) _____

Total amount enclosed **\$4 x** _____ = _____

**All participants mailing in entries will be emailed their tickets.
Please include a current email address.**

**MAKE CHECKS PAYABLE TO WEBER COUNTY FAIR.
NO LATE ENTRIES WILL BE ACCEPTED**

MAIL TO:
Fiesta 4-H Horse Show
1000 North 1200 West
Ogden, UT 84404

JR. POSSE ENTRY FORM

DEADLINE AUGUST 2, 2024

Date of Entry _____ Exhibitor's Birth Date _____
Exhibitor's Name _____ Email _____
Parent/Guardian's Name _____
Street Address _____
City _____ State _____ Zip _____
Phone _____ Last Grade Completed in School _____
Riding Level _____ Name of Posse _____

Please accept the entries indicated below, subject to the rules and classifications governing exhibits at the Weber County Fair as published in the Premium Book, by which I hereby agree to be governed in exhibiting the same and I further declare that all statements made in connection with said entered are true. I hereby release the Weber County Fair from all liability of every kind and character on account of loss, damages, or injury to property which I have on the fairgrounds.

Please list team members below

1 _____
2 _____

Exhibitor's signature _____
Parent/Guardian's signature _____

NOTE: Each exhibitor will receive two complimentary day ticket with entry

Entry fee **\$20** _____

Additional day tickets needed (**max 2 tickets**) _____

Total amount enclosed **\$4** x _____ = _____

MAIL TO:
Jr. Posse Show
1000 North 1200 West
Ogden, UT 84404

**All participants mailing in entries will be emailed their tickets.
Please include a current email address.**
MAKE CHECKS PAYABLE TO WEBER COUNTY FAIR.
NO LATE ENTRIES WILL BE ACCEPTED

OPEN ALL BREED HORSE SHOW ENTRY FORM

DEADLINE AUGUST 2, 2024

Date of Entry _____ Age of Exhibitor (if a Youth) _____
 Exhibitor's Name _____ Email _____
 Parent/Guardian's Name _____
 Street Address _____
 City _____ State _____ Zip _____
 Phone _____
 Name of Horse _____ Breed _____

Please accept the entries indicated below, subject to the rules and classifications governing exhibits at the Weber County Fair as published in the Premium Book, by which I hereby agree to be governed in exhibiting the same and I further declare that all statements made in connection with said entered are true. I hereby release the Weber County Fair from all liability of every kind and character on account of loss, damages, or injury to property which I have on the fairgrounds.

Open \$12/class & Youth \$10/class

CLASS#	CLASS NAME	ENTRY FEE
Total Entry Fees		
+ Participant Ticket		\$4
Total amount enclosed		

NOTE: Each exhibitor will receive two complimentary day passes with entry.

Exhibitor's signature _____
 Parent/Guardian's signature _____

**All participants mailing in entries will be emailed their tickets.
 Please include a current email address.**

MAKE CHECKS PAYABLE TO WEBER COUNTY FAIR.

MAIL TO:
 Open All Breed
 1000 North 1200 West
 Ogden, UT 84404

POULTRY ENTRY FORM

DEADLINE JULY 31, 2024

Date of Entry _____ Age Division (peewee, junior, open) _____
Exhibitor's Name _____ Email _____
Street Address _____
City _____ State _____ Zip _____
Phone _____

Please accept the entries indicated below, subject to the rules and classifications governing exhibits at the Weber County Fair as published in the Premium Book, by which I hereby agree to be governed in exhibiting the same and I further declare that all statements made in connection with said entered are true. I hereby release the Weber County Fair from all liability of every kind and character on account of loss, damages, or injury to property which I have on the fairgrounds.

ENTRIES MUST BE MADE ON THIS FORM (abbreviations on color, classes, or birds will not be accepted)

LARGE FOWL OR BANTAMS	BREED	COCK, COCKEREL, HEN PULLET (COCKEREL/PULLET HATCH CURRENT YEAR)	ENTRY FEE
Total Entry Fees			
Check one: Total for participant tickets at <input type="checkbox"/> \$4 per day, or <input type="checkbox"/> \$12 for 4 days			
Total amount enclosed			

NOTE: Each exhibitor will receive two complimentary day passes with entry.

Exhibitor's signature _____
Parent/Guardian's signature _____
Owner's signature _____

MAIL TO:
Poultry Show
1000 North 1200 West
Ogden, UT 84404

**All participants mailing in entries will be emailed their tickets.
Please include a current email address.**

RABBIT ENTRY FORM

DEADLINE AUGUST 2, 2024

Date of Entry _____ Age of Exhibitor (if a Youth) _____
Exhibitor's Name _____ Email _____
Street Address _____
City _____ State _____ Zip _____
Phone _____

Please accept the entries indicated below, subject to the rules and classifications governing exhibits at the Weber County Fair as published in the Premium Book, by which I hereby agree to be governed in exhibiting the same and I further declare that all statements made in connection with said entered are true. I hereby release the Weber County Fair from all liability of every kind and character on account of loss, damages, or injury to property which I have on the fairgrounds.

NO SICK ANIMALS WILL BE ALLOWED IN SHOW. SHOW WILL BE SANCTIONED BY A.R.B.A.

Please use asterisk * to indicate which rabbits prefer carrying cage.

TATTOO# L-EAR	BREED	VARIETY	SEX	CLASS JR	CLASS S	FUR	ENTRY FEE
Total Entry Fees							
Check one: Total for participant tickets at <input type="checkbox"/> \$4 per day, or <input type="checkbox"/> \$12 for 4 days							
Total amount enclosed							

NOTE: Each exhibitor will receive two complimentary day passes with entry.

Exhibitor's signature _____
Parent/Guardian's signature _____
Owner's signature _____

**All participants mailing in entries will be emailed their tickets.
Please include a current email address.**

MAIL TO:
Rabbit Show
1000 North 1200 West
Ogden, UT 84404

GRAND CHAMPION SPONSORS



WEBERCOUNTYFAIR.ORG

Click to return to front cover